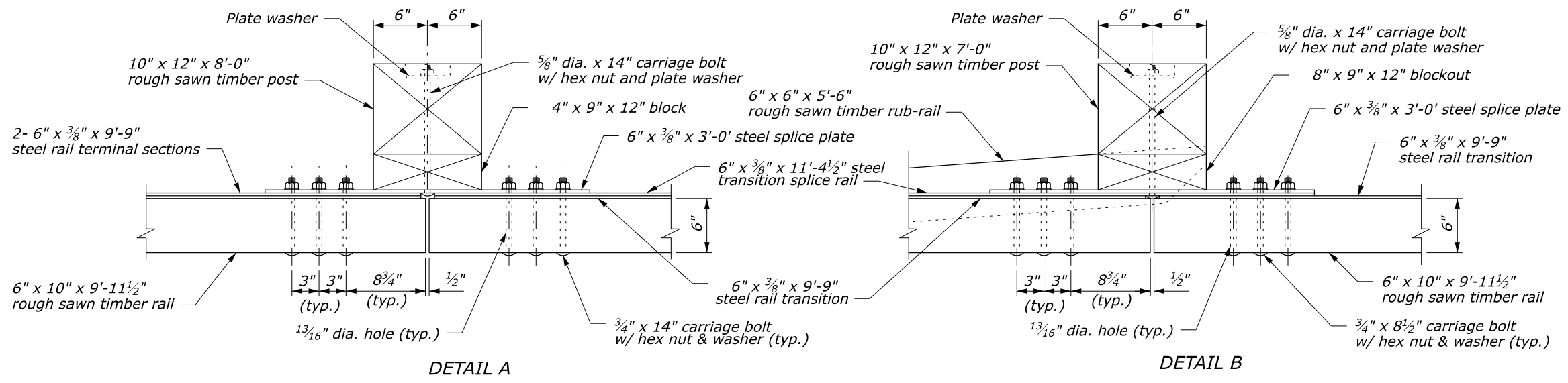
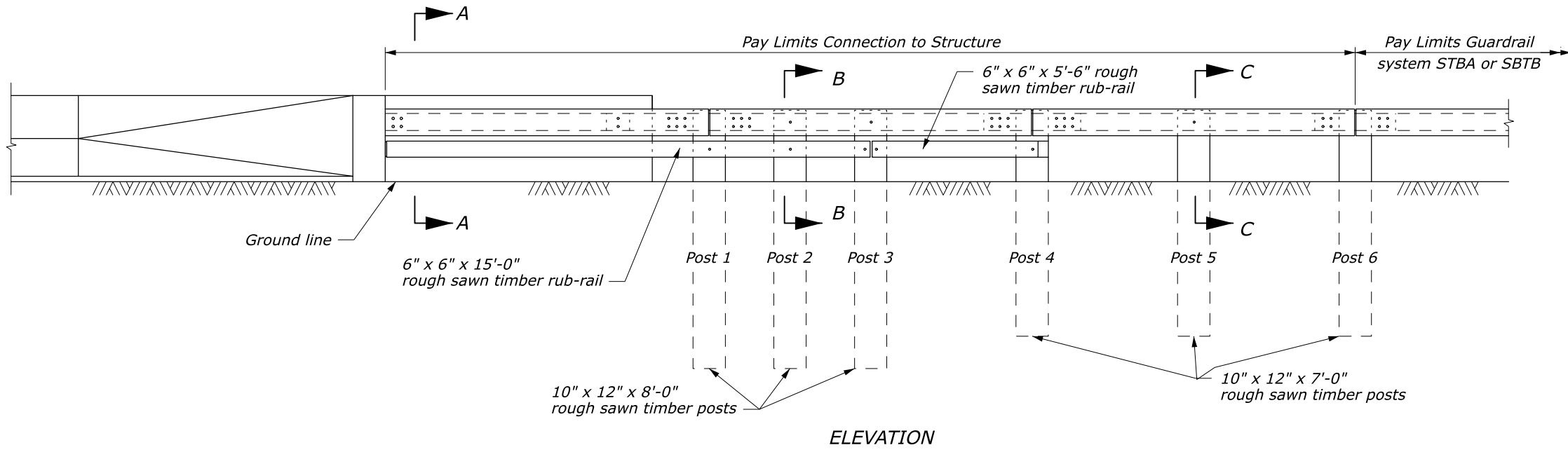
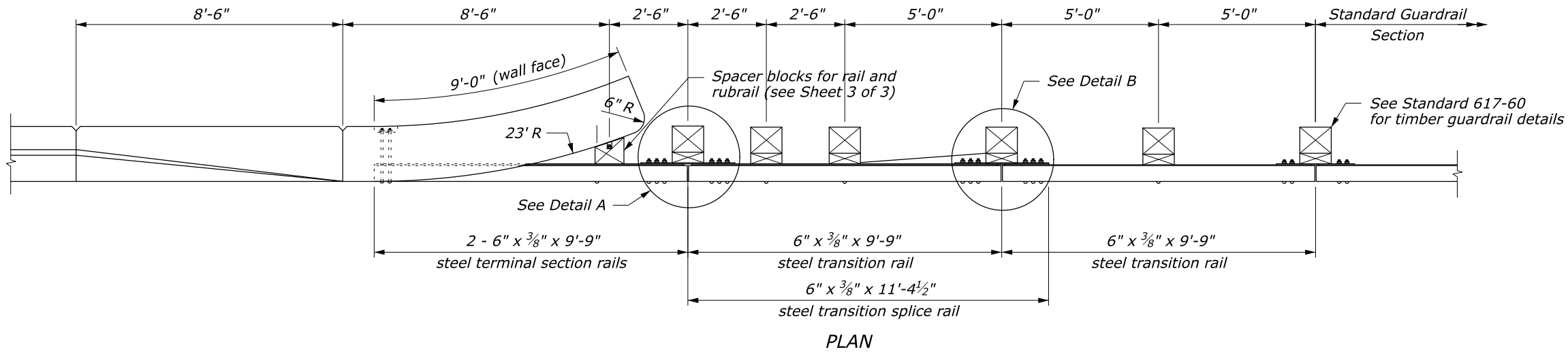


STATE	PROJECT	SHEET NUMBER



POST CONNECTION

NOTES:

1. See Sheets 2 of 3 and 3 of 3 for Sections A-A through C-C, steel rail layouts, and other details.
2. Use weathering steel for all structural steel and fastener hardware.

U.S. DEPARTMENT OF TRANSPORTATION
FEDERAL HIGHWAY ADMINISTRATION
OFFICE OF FEDERAL LANDS HIGHWAY

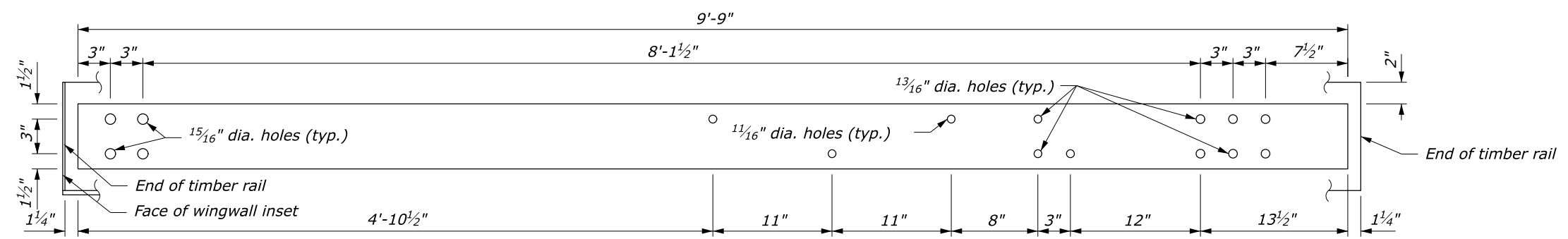
EFLHD DETAIL
STEEL-BACKED TIMBER GUARDRAIL
CONNECTION TO
CURVED BACK STRUCTURE
Sheet 1 of 3

STANDARD APPROVED FOR USE 1/1994
REVISED: 4/1994 9/2014 9/2020

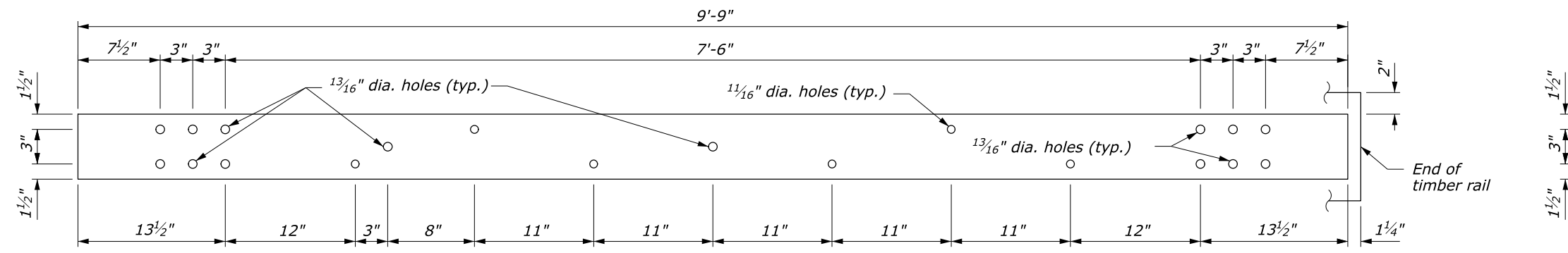
DETAIL
ET 617-66

NO SCALE

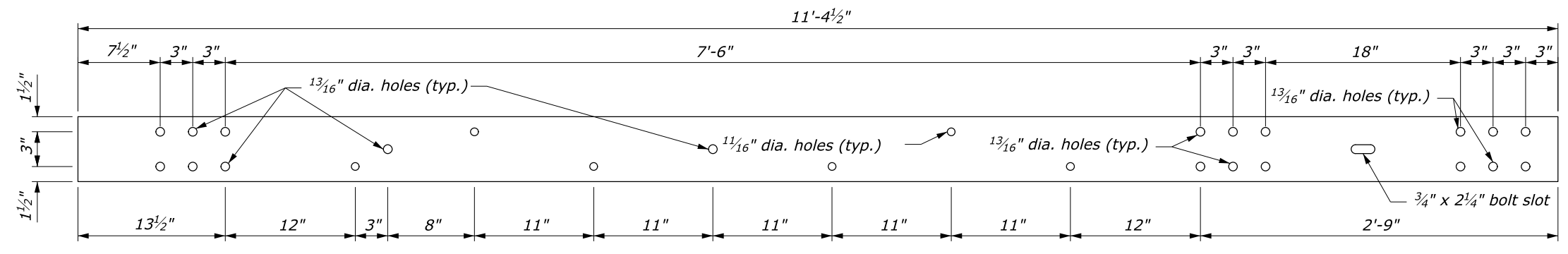
G:\Engineering\Software\Bentley\Software\OpenRoads\Design\CONFIG\OpenRoads_Designer_CE_WS\5\OpenRoads_Designer_CE_WS\5\Cell\FLH-Cells.cel [Base.B.US] 12 March 2020 7:27 AM



TERMINAL SECTION RAIL
6" x 3/8" x 9'-9"

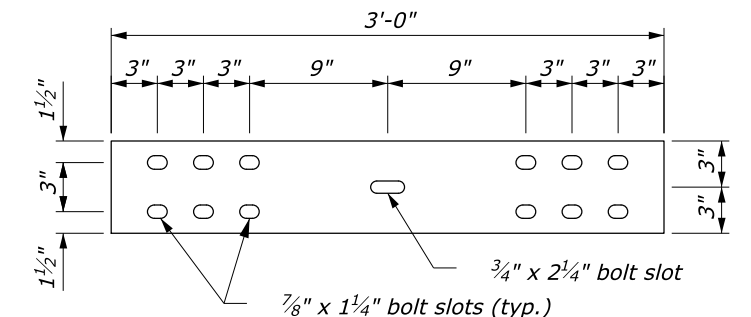


TRANSITION RAIL
6" x 3/8" x 9'-9"

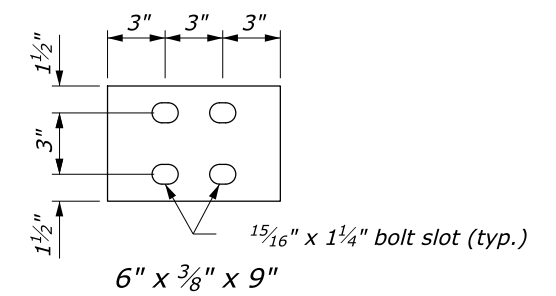


TRANSITION SPLICE RAIL
6" x 3/8" x 11'-4 1/2"

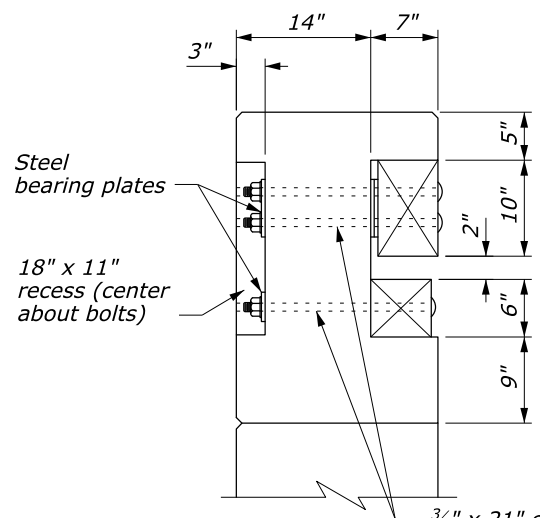
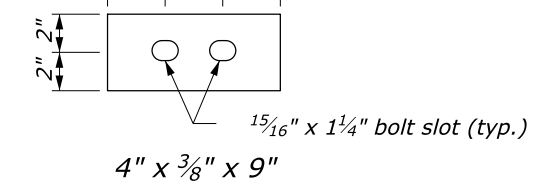
NOTE:
Pre-drill 5/8-inch holes in timber rail and 3/8-inch holes in the wood spacer block for the 5/8-inch lag screws.



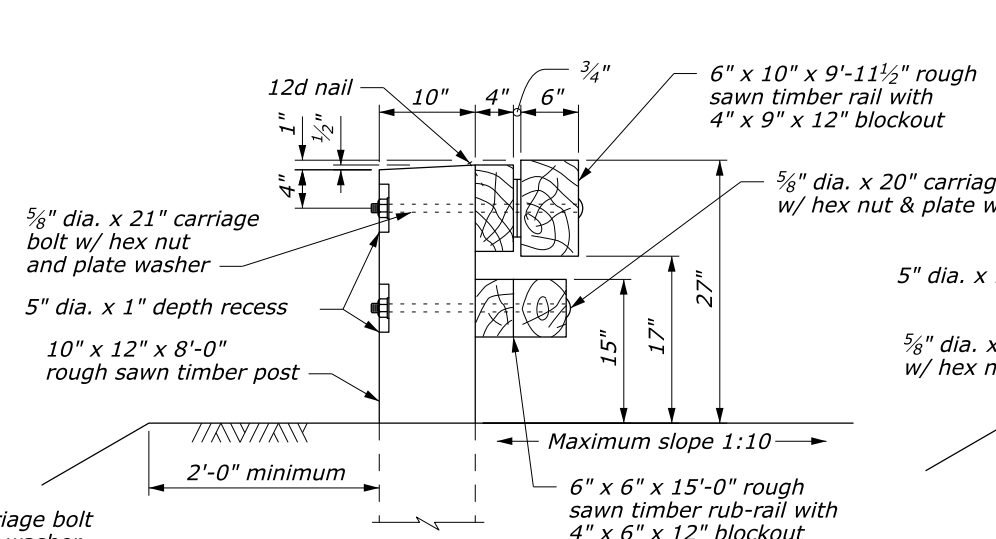
SPLICE PLATE
6" x 3/8" x 3'-0"



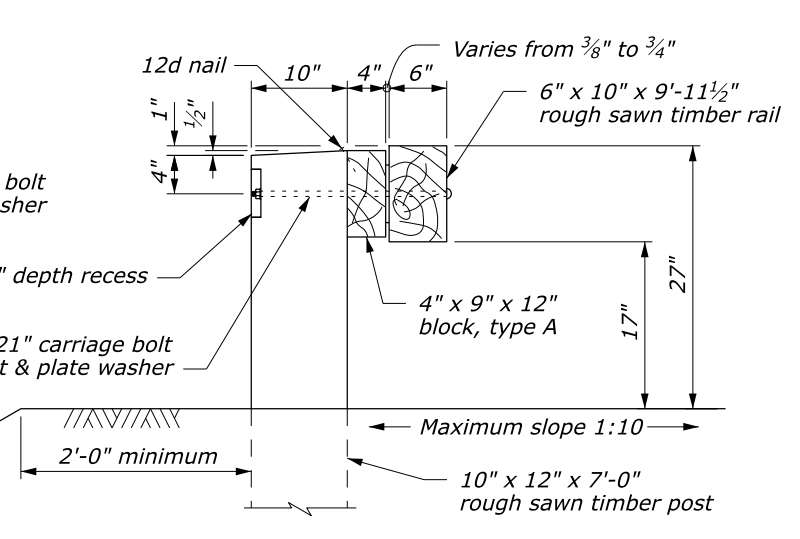
BEARING PLATE DETAILS
6" x 3/8" x 9"



SECTION A-A



SECTION B-B



SECTION C-C

NO SCALE

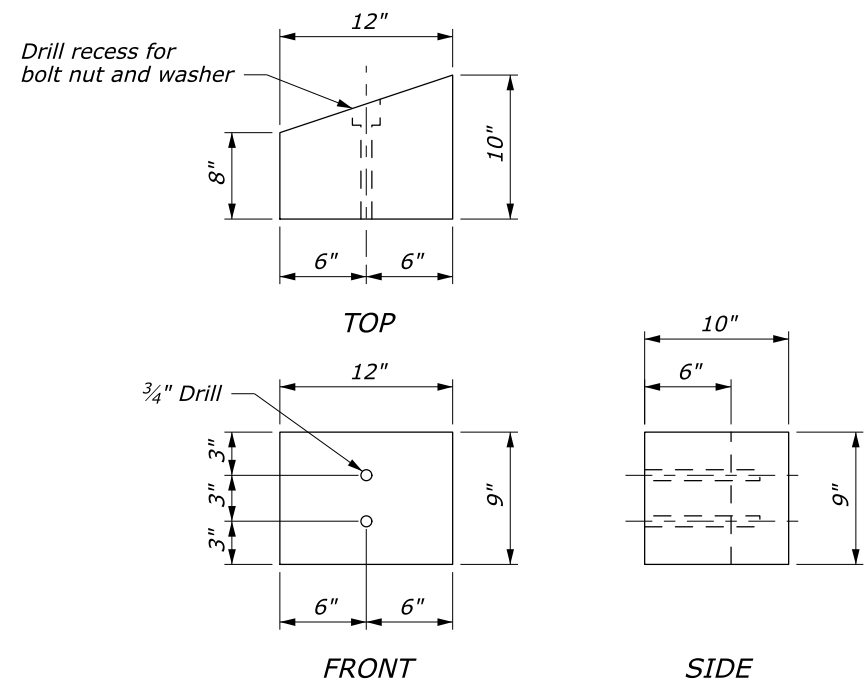
U.S. DEPARTMENT OF TRANSPORTATION
FEDERAL HIGHWAY ADMINISTRATION
OFFICE OF FEDERAL LANDS HIGHWAY

EFLHD DETAIL
STEEL-BACKED TIMBER GUARDRAIL
CONNECTION TO
CURVED BACK STRUCTURE
Sheet 2 of 3

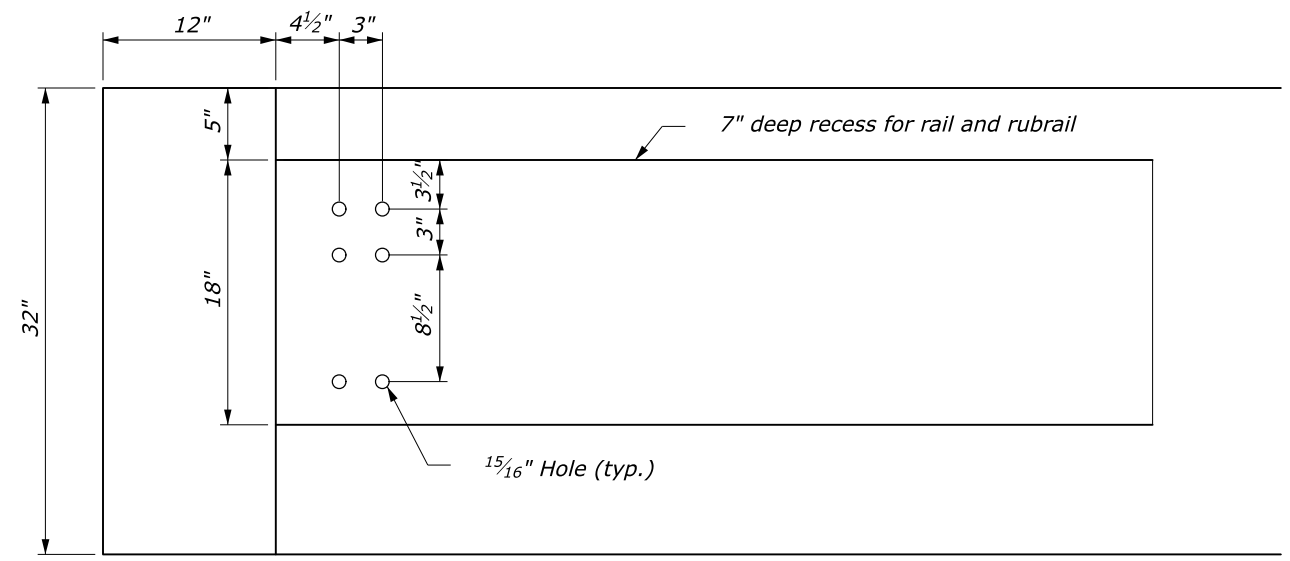
STANDARD APPROVED FOR USE 1/1994
REVISED: 4/1994 9/2014 9/2020

DETAIL
ET 617-66

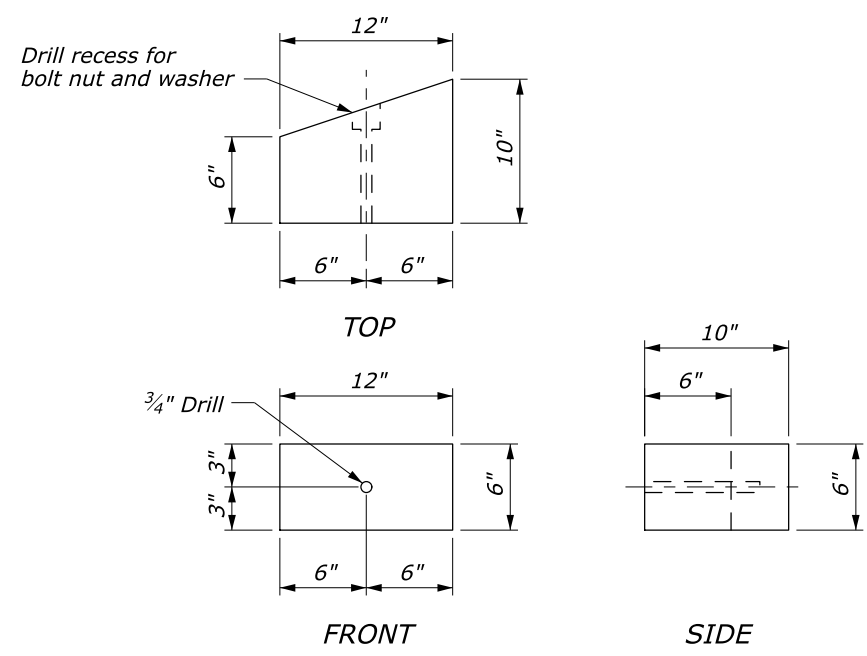
G:\Engineering_Software\Cadd\Bentley_Software\OpenRoads_Designer\CONFIG\OpenRoads_Designer_CE_WS\5\OpenRoads_Designer_CE_WS\5\OpenRoads_Designer_CE_WS\5\Cell\FLH-Cells.cel [Base.B.US] 12 March 2020 7:27 AM



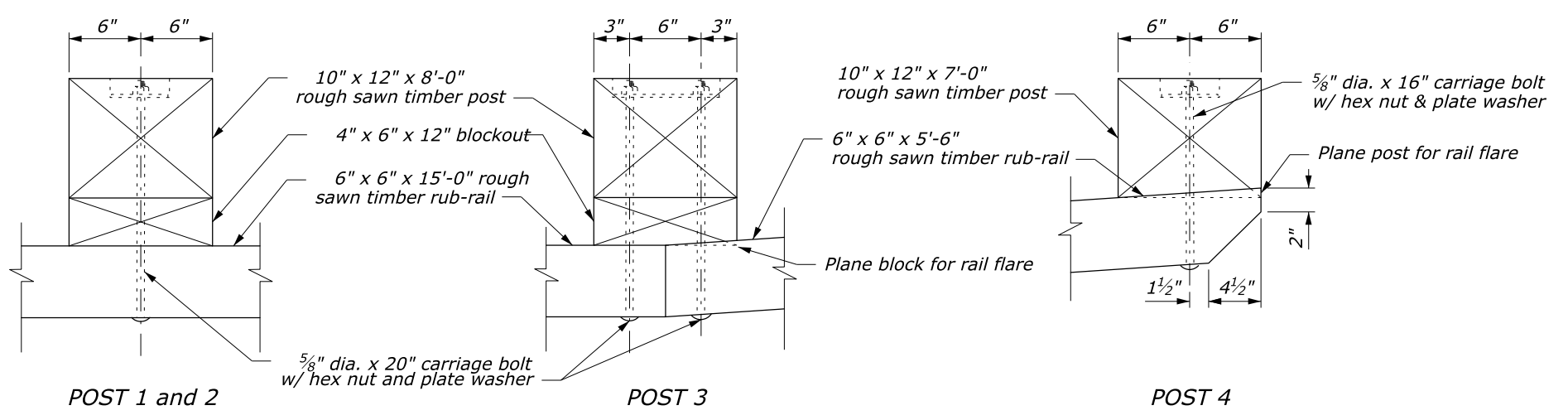
SPACER BLOCK FOR RAIL



PARAPET ATTACHMENT DETAIL



SPACER BLOCK FOR RUB-RAIL



RUB-RAIL CONNECTIONS

U.S. DEPARTMENT OF TRANSPORTATION FEDERAL HIGHWAY ADMINISTRATION OFFICE OF FEDERAL LANDS HIGHWAY	
EFLHD DETAIL STEEL-BACKED TIMBER GUARDRAIL CONNECTION TO CURVED BACK STRUCTURE Sheet 3 of 3	
STANDARD APPROVED FOR USE 1/1994 REVISED: 4/1994 9/2014 9/2020	DETAIL ET 617-66

NO SCALE

G:\Engineering_Software\Bentley_Software\OpenRoads_Designer\CONFIG\OpenRoads_Designer_CE_WS\5\OpenRoads_Designer_CE_Configuration\Organization\Civil\FLH_Survey\Standards-WSSVA\Civil\FLH-Cells.cel [Base.B.US] 12 March 2020 7:27 AM