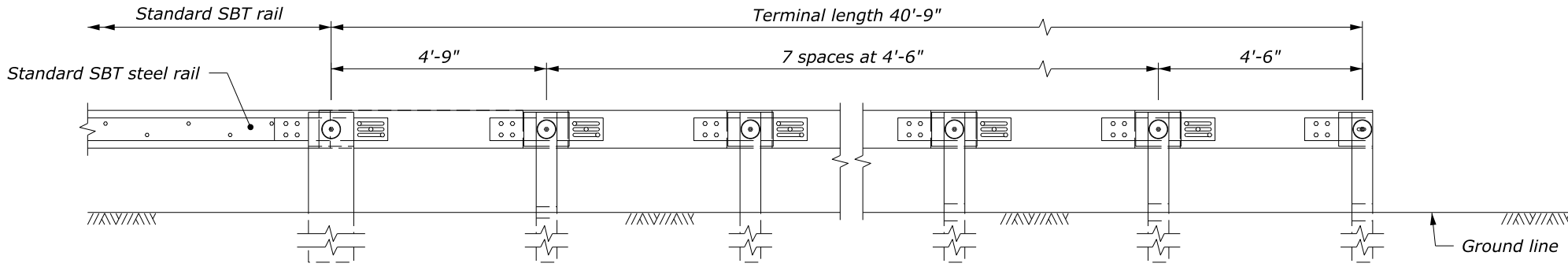
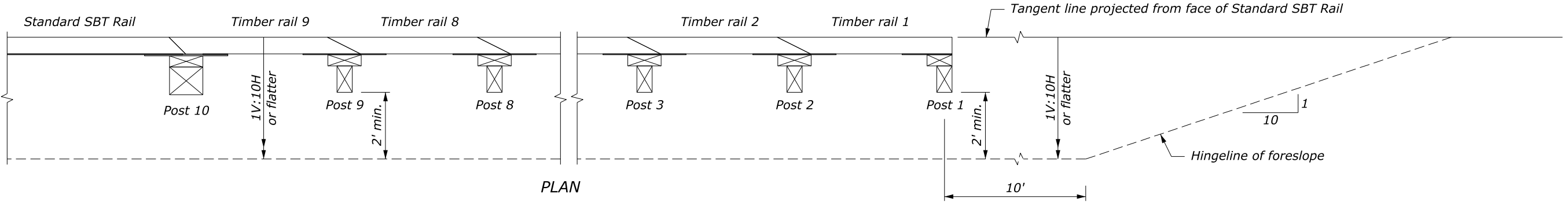


STATE	PROJECT	SHEET NUMBER

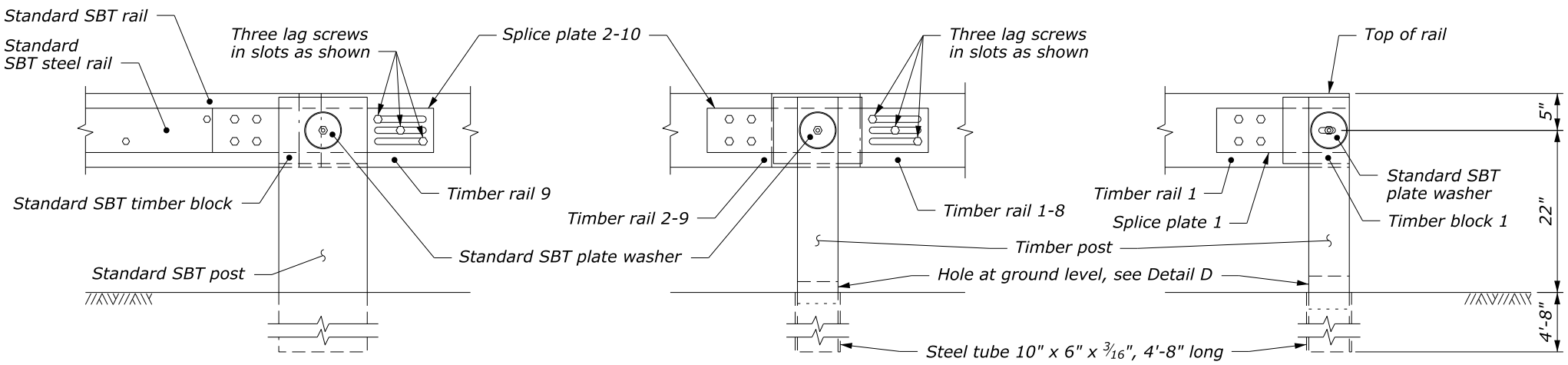


ELEVATION

NOTE:
See Standard 617-60 for standard SBT guardrail details.



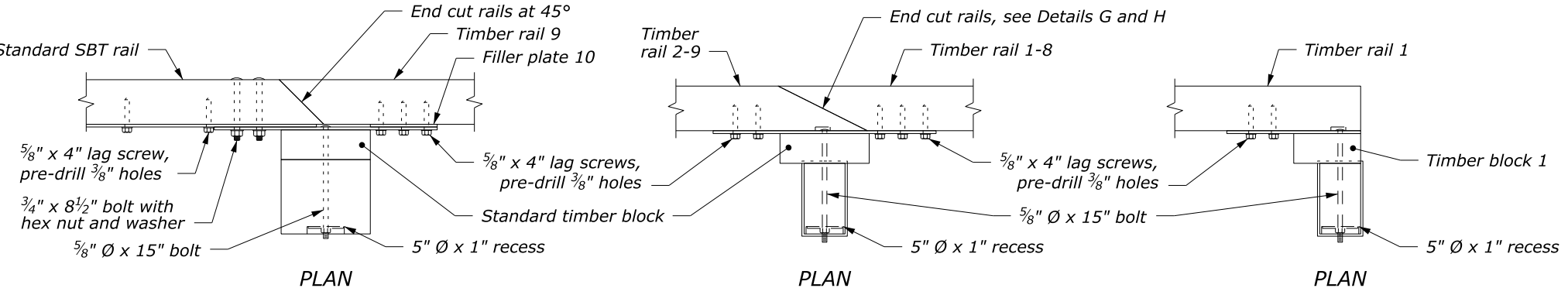
PLAN



ELEVATION

ELEVATION

ELEVATION



PLAN

PLAN

PLAN

**POST/RAIL CONNECTION
AT POST 10
DETAIL A**

**POST/RAIL CONNECTION
AT POSTS 2-9
DETAIL B**

**POST/RAIL CONNECTION
AT POST 1
DETAIL C**

U.S. DEPARTMENT OF TRANSPORTATION
FEDERAL HIGHWAY ADMINISTRATION
OFFICE OF FEDERAL LANDS HIGHWAY

**EFLHD DETAIL
TL-2 END TERMINAL
FOR STEEL-BACKED
TIMBER GUARDRAIL**
Sheet 1 of 2

NO SCALE

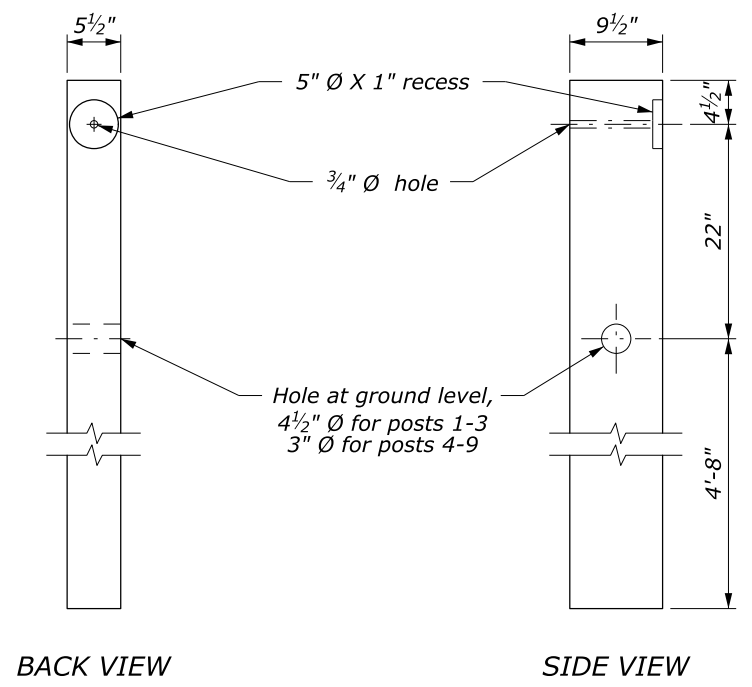
REVISID: 4/2016 1/2018 9/2020

DETAIL
ET 617-69

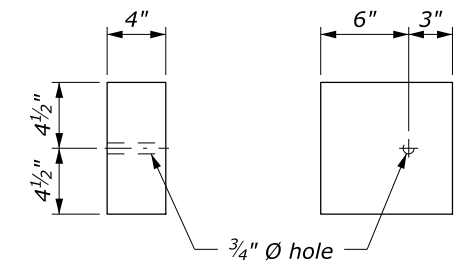
G:\Engineering\Software\Cadd\Bentley_Software\OpenRoads_Designer\CONFIG\OpenRoads_Designer_CE_WS\5\OpenRoads_Designer_CE_WS\5\OpenRoads_Designer_CE_WS\5\Cell\FLH-Cells.cel [Base.B.US] 12 March 2020 7:27 AM

STATE	PROJECT	SHEET NUMBER

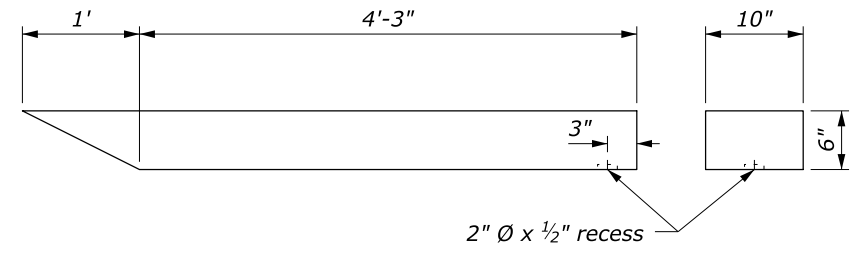
NOTE:
Use the weathering steel for all steel backing plates and fastener hardware.



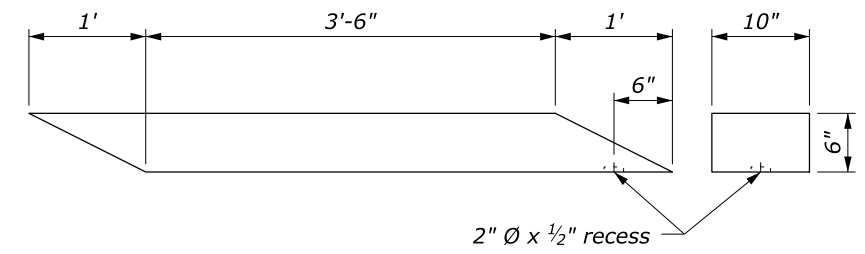
TIMBER POSTS 1 - 9
DETAIL D



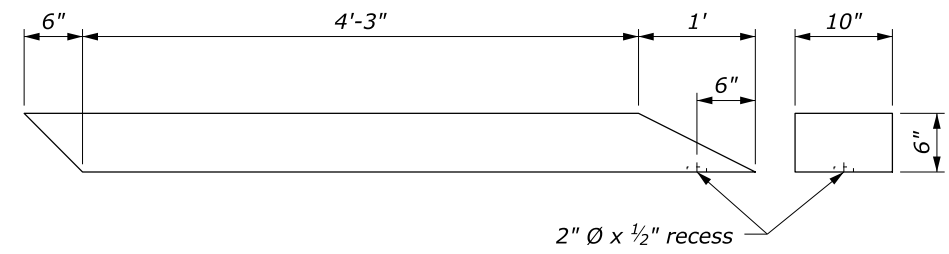
TIMBER BLOCK 1
DETAIL E



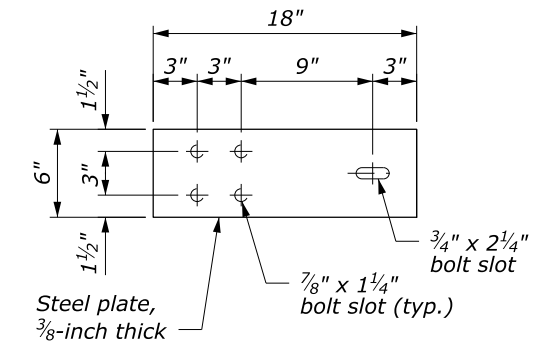
TIMBER RAIL 1
DETAIL F



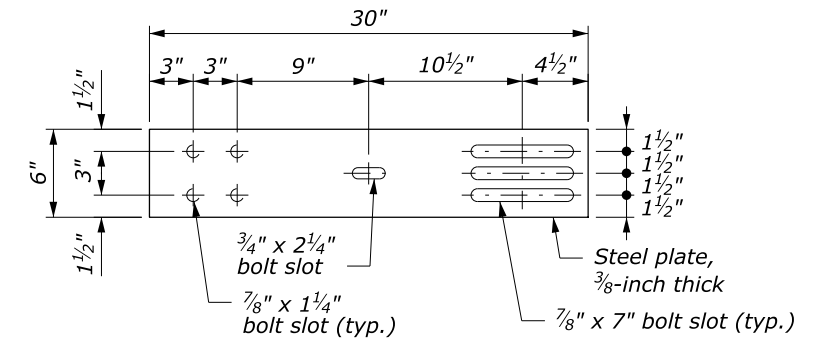
TIMBER RAILS 2-8
DETAIL G



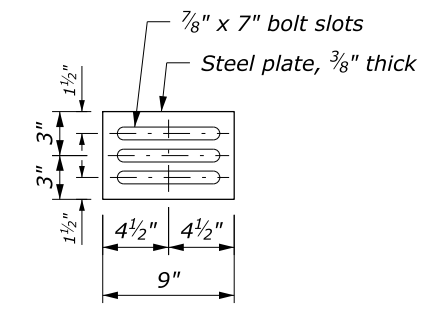
TIMBER RAIL 9
DETAIL H



SPLICE PLATE 1
DETAIL I



SPLICE PLATE 2-10
DETAIL J



FILLER PLATE 10
DETAIL K

U.S. DEPARTMENT OF TRANSPORTATION
FEDERAL HIGHWAY ADMINISTRATION
OFFICE OF FEDERAL LANDS HIGHWAY

EFLHD DETAIL
TL-2 END TERMINAL
FOR STEEL-BACKED
TIMBER GUARDRAIL
Sheet 2 of 2

NO SCALE

REVISID: 4/2016 1/2018 9/2020

DETAIL
ET 617-69

G:\Engineering_Software\Bentley_Software\OpenRoads_Designer\CONFIG\OpenRoads_Designer_CE\W5V5\OpenRoads_Designer_CE\Configuration\Organization\Civil\FLH_Survey\Standards-WSSVA\Cell\FLH-Cells.cel [Base.B.US] 12 March 2020 7:27 AM