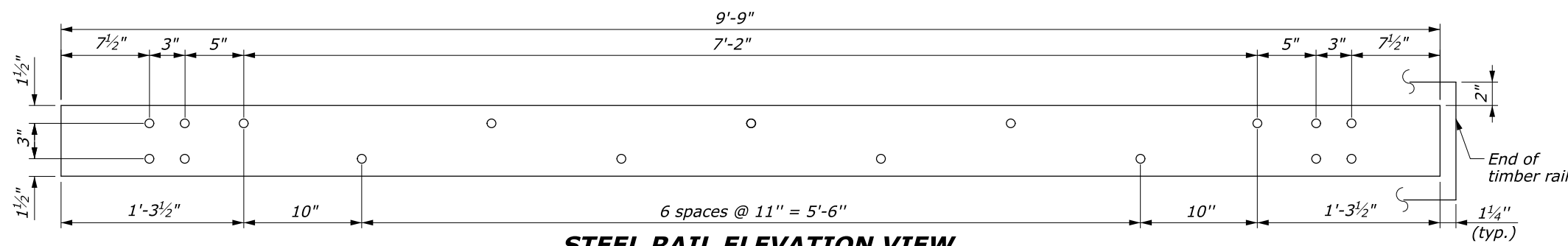
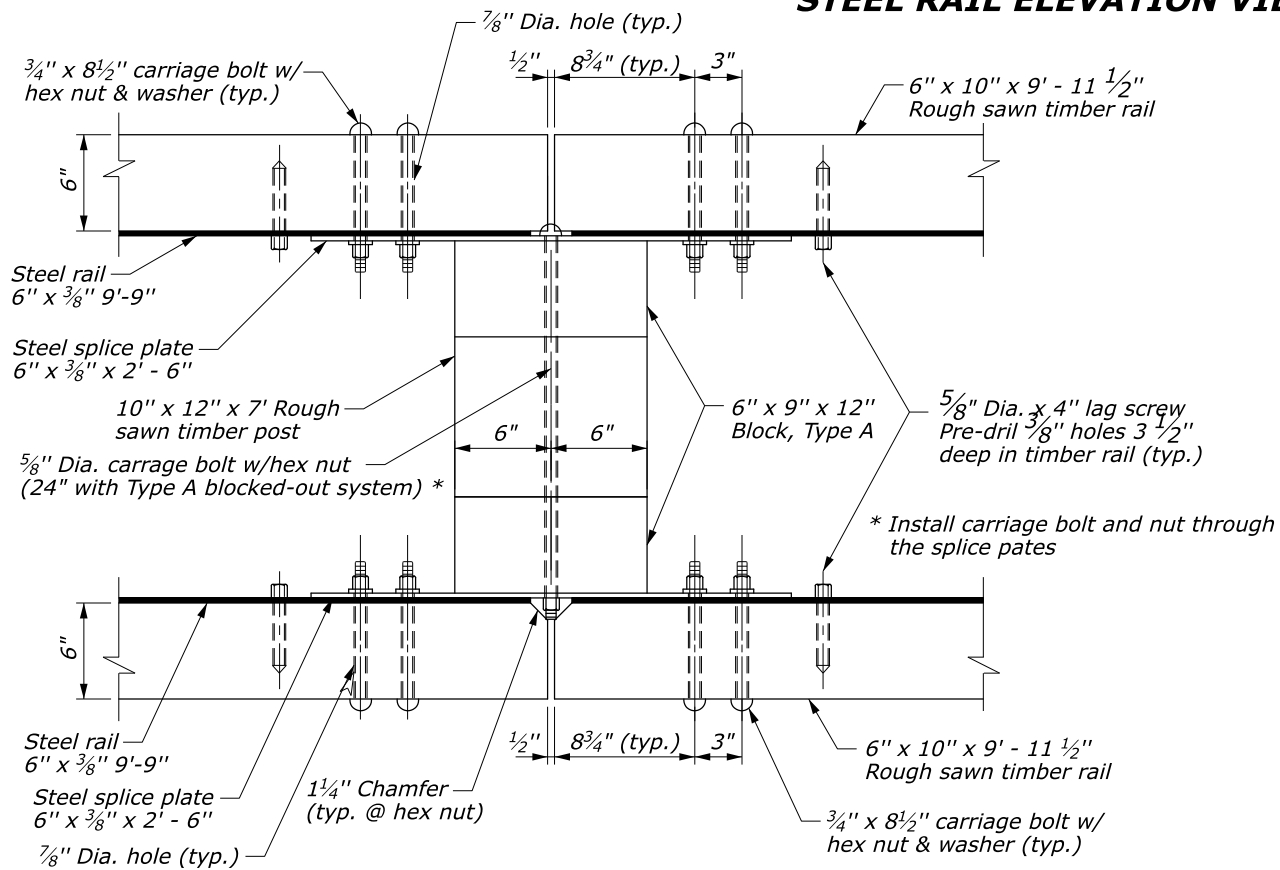


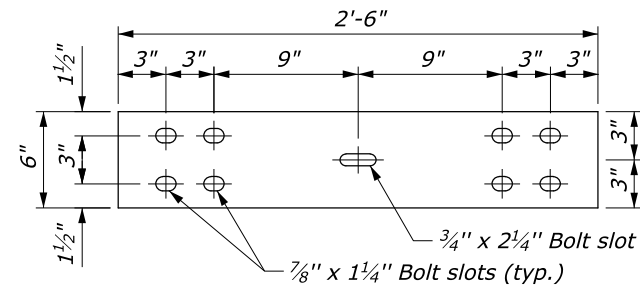
STATE	PROJECT	SHEET NUMBER



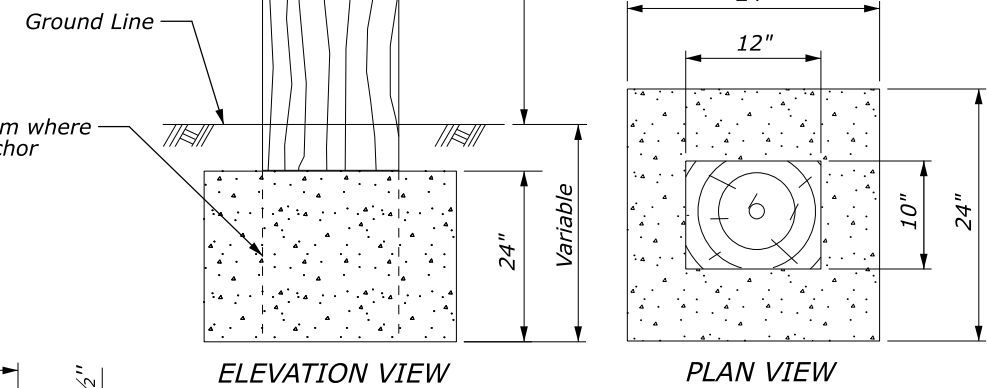
**STEEL RAIL ELEVATION VIEW**



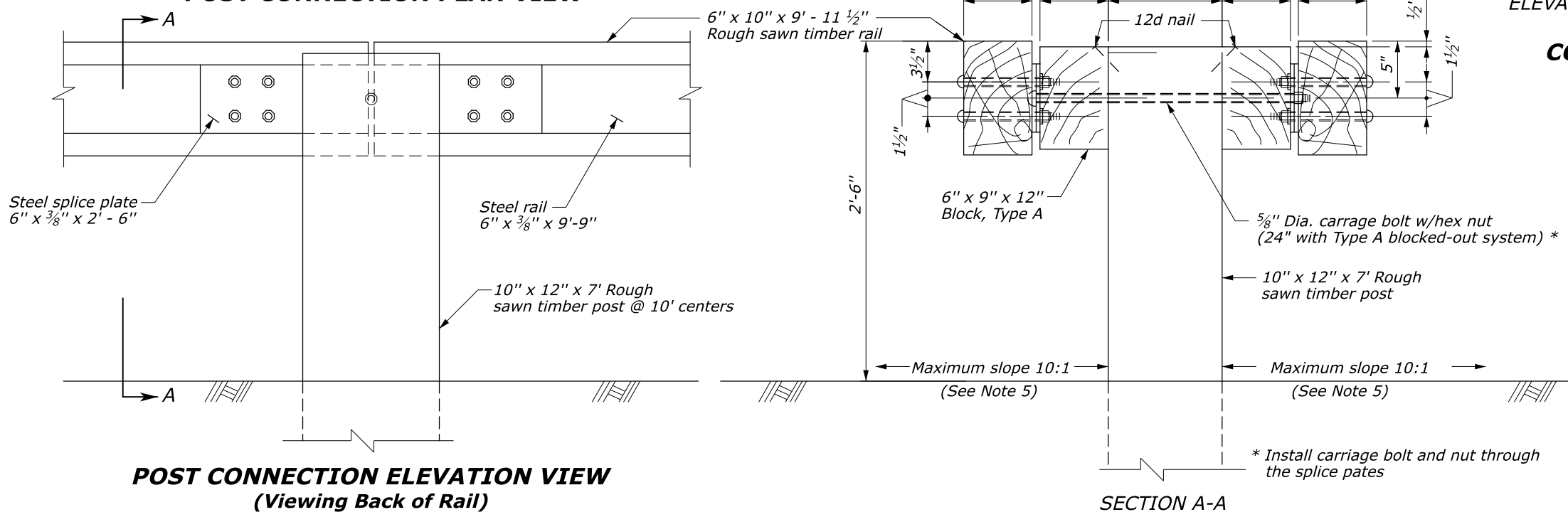
**POST CONNECTION PLAN VIEW**



**STEEL SPLICE PLATE**  
6" x 3/8" x 2'-6"



**CONCRETE ANCHOR FOR SHORT GUARDRAIL ASSEMBLY**  
(SEE NOTE 4)



**POST CONNECTION ELEVATION VIEW**  
(Viewing Back of Rail)

SECTION A-A

NO SCALE

**NOTES:**

1. Use the Type A, blocked-out, system for median guardrail.
2. Use weathering steel for all structural steel and fastener hardware as specified.
3. Place a terminal section on both approach and trailing ends of median barrier installations. See Detail ET 617-61 and Standard 617-62.
4. Use no more than 3 short guardrail posts in a row. A 25-inch diameter round anchor may be used instead of the square anchor shown. A reduced size is acceptable in solid rock as approved by the CO.
5. In areas where the rail face is offset a minimum of 20 feet from the edge of travel lane, a maximum approach shoulder slope of 1V:6H may be used.

U.S. DEPARTMENT OF TRANSPORTATION FEDERAL HIGHWAY ADMINISTRATION OFFICE OF FEDERAL LANDS HIGHWAY	
EFLHD DETAIL	
<b>STEEL-BACKED TIMBER GUARDRAIL MEDIAN, TYPE A</b>	
DETAIL APPROVED FOR USE APPROVED: MAY 2011 REVISED: FEBRUARY 2022	DETAIL E617-70