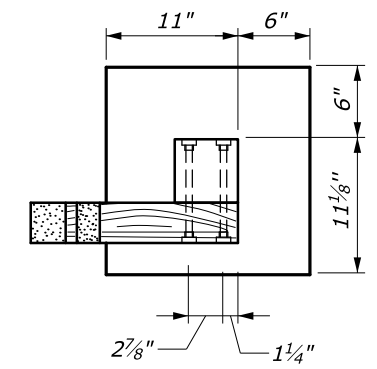
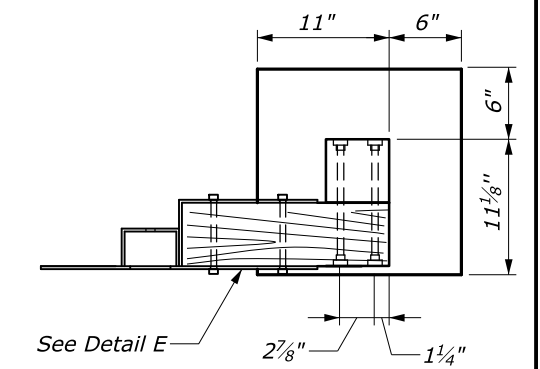


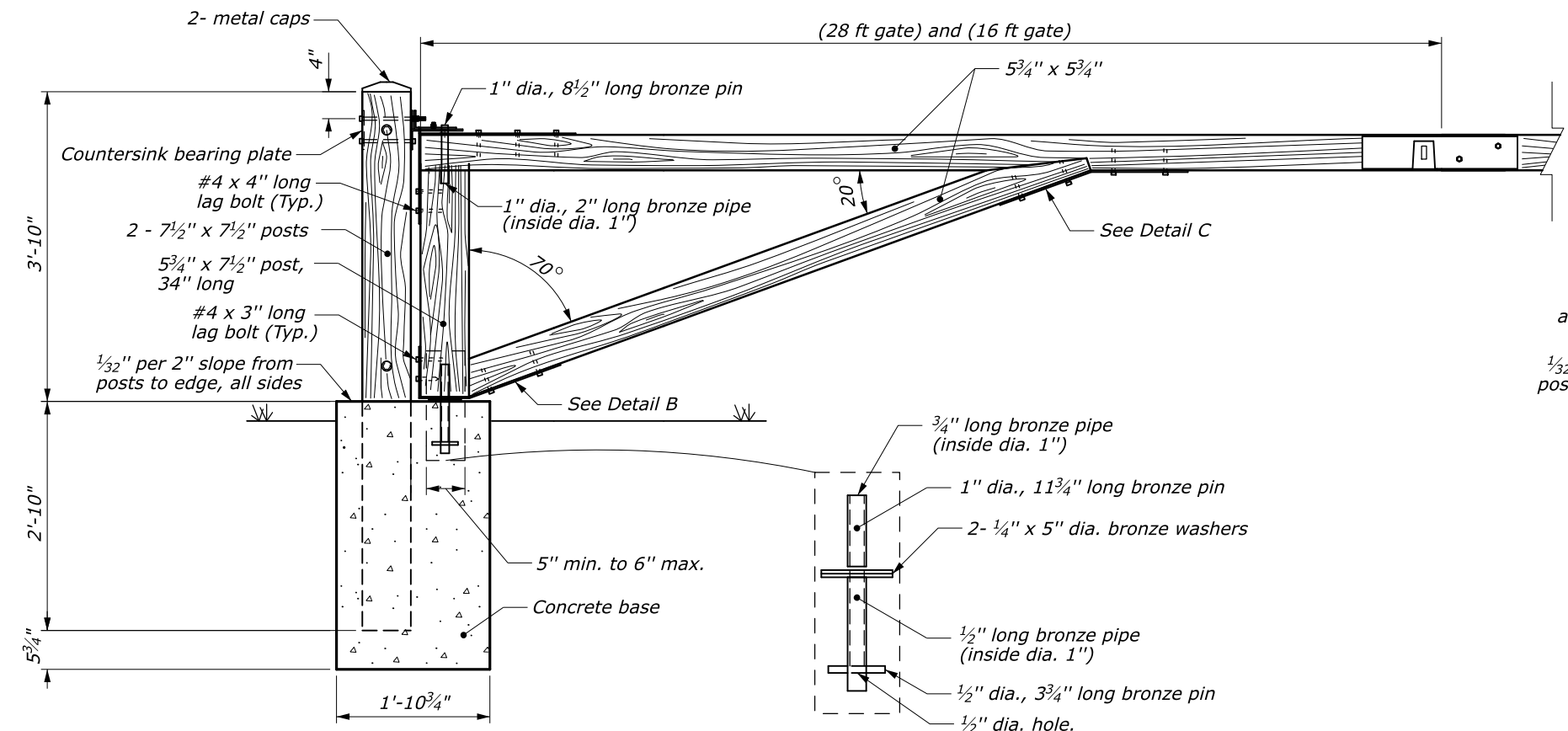
PLAN



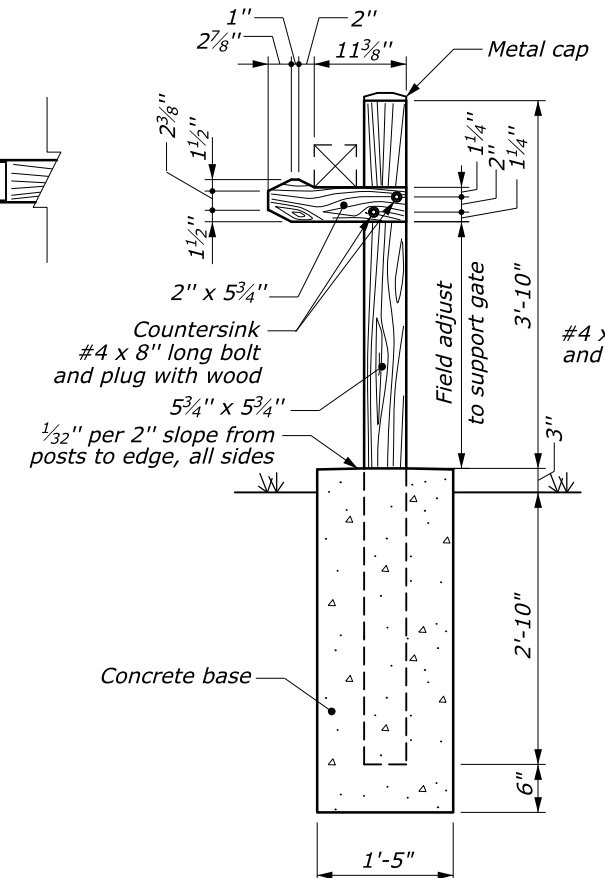
REST POST PLAN



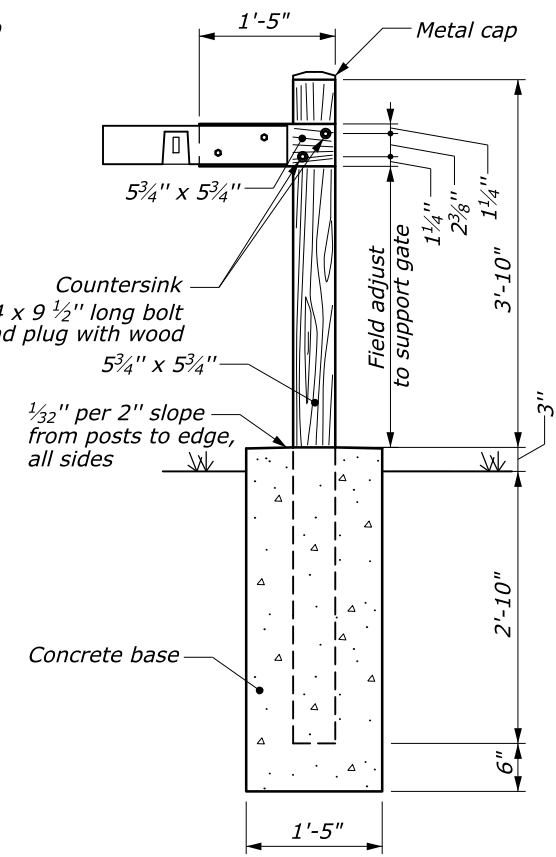
LOCK POST PLAN



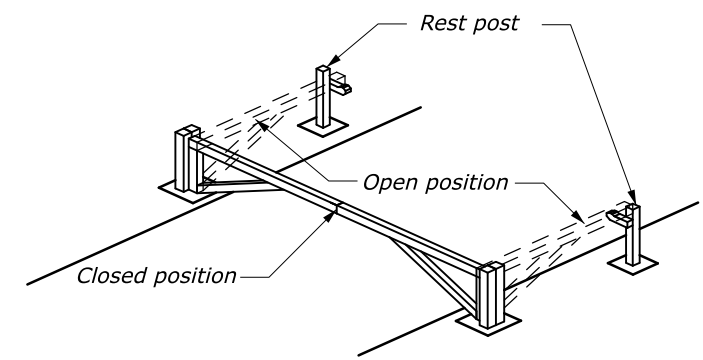
ELEVATION



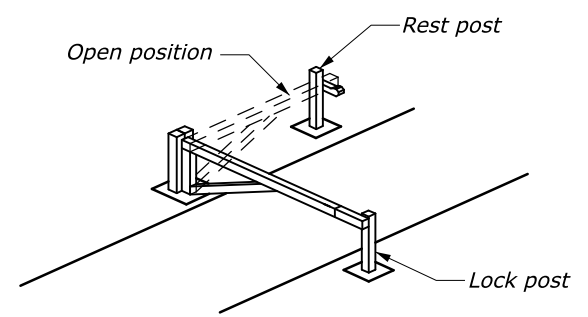
REST POST ELEVATION



LOCK POST ELEVATION



ISOMETRIC VIEW OF 28-FOOT GATE



ISOMETRIC VIEW OF 16-FOOT GATE

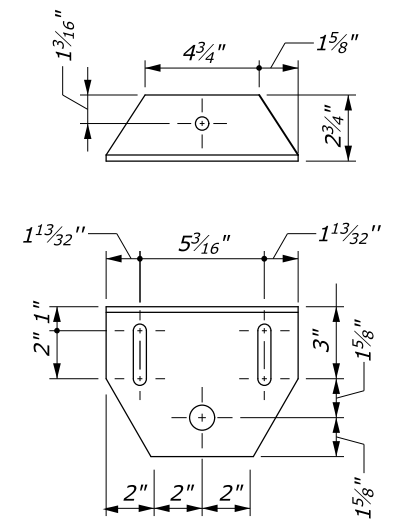
NOTES:

1. Use #4 bolts unless otherwise specified.
2. Use 1-inch diameter washers under all bolt heads and nuts unless otherwise specified.
3. Use double hot dip galvanized hardware, except parts made of bronze.
4. Use select Douglas Fir or Southern Yellow Pine (545) timbers. Pressure treat posts embedded in concrete to 0.60 to 0.80 CCA, and all other timbers to 0.40 CCA. Apply 3 brush-coats of CCA to all saw cut areas and drilled holes.
5. Make all necessary field adjustments to produce a plumb gate as approved by the CO.

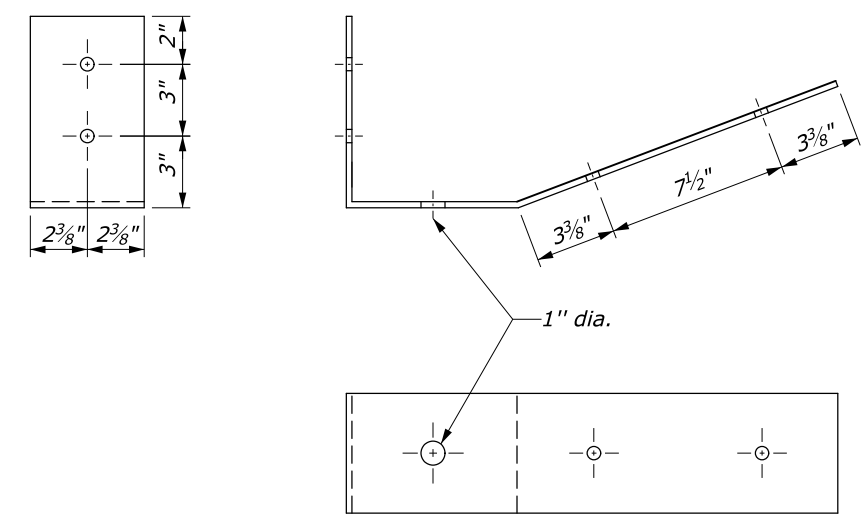
NO SCALE

U.S. DEPARTMENT OF TRANSPORTATION FEDERAL HIGHWAY ADMINISTRATION OFFICE OF FEDERAL LANDS HIGHWAY	
EFLHD DETAIL	
16 FEET AND 28 FEET GATES Sheet 1 of 2	
DETAIL APPROVED FOR USE APPROVED: MAY 2011 REVISED: SEPTEMBER 2020	DETAIL E619-04

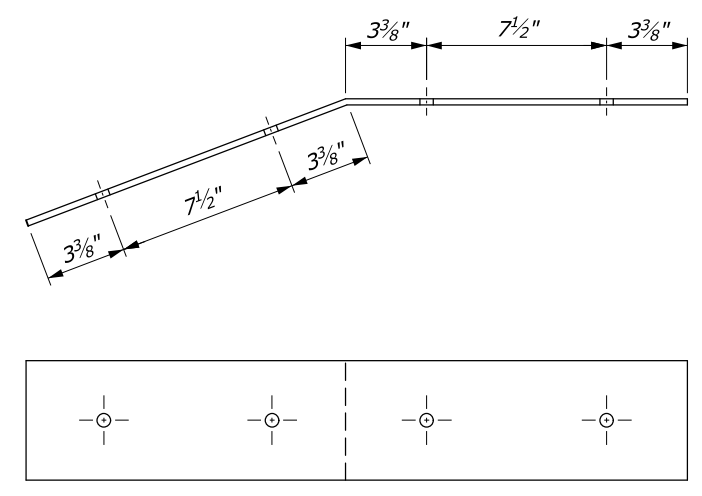
M:\Standards_and_Details\EFLHD_Detail-Drawings\FP-14\FP-14_ORD_Version\ORD_Ready\Section-619\st61904_detail.dgn [Sheet 1] 31 January 2021 9:09 PM



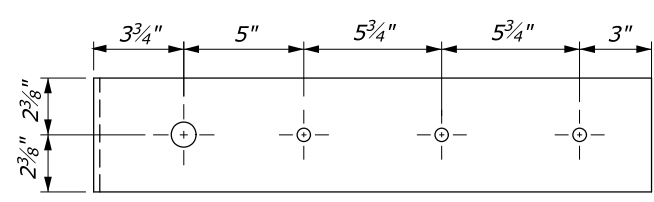
DETAIL A



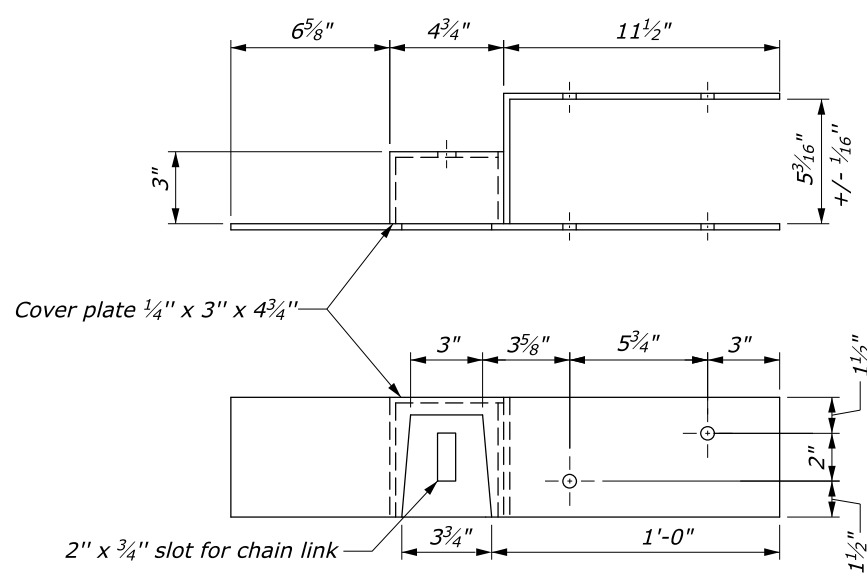
DETAIL B



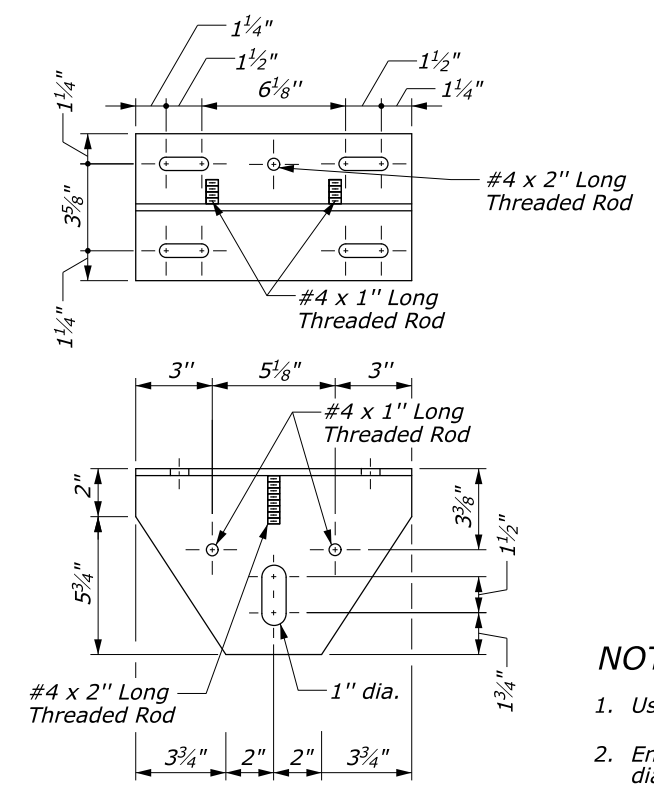
DETAIL C



DETAIL D

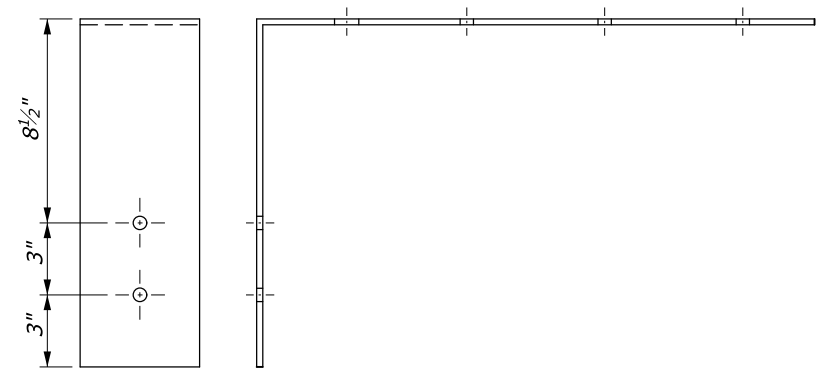


DETAIL E

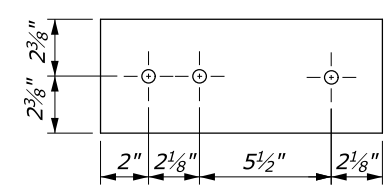


DETAIL F

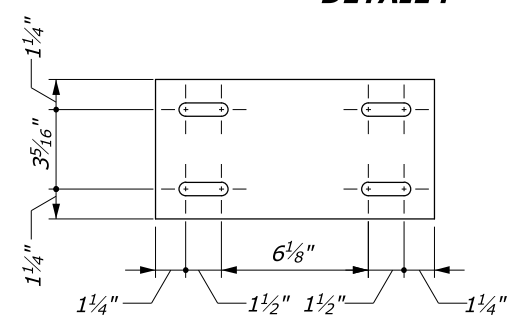
- NOTES:**
1. Use 1/4-inch thick steel plates.
 2. Ensure all holes are 9/16-inch diameter, unless otherwise shown.
 3. Use 1/2-inch diameter bolts unless otherwise shown.
 4. Use double hot dip galvanized steel plates and hardware.
 5. Verify all dimensions.



DETAIL G



DETAIL H



DETAIL J

NO SCALE

U.S. DEPARTMENT OF TRANSPORTATION FEDERAL HIGHWAY ADMINISTRATION OFFICE OF FEDERAL LANDS HIGHWAY	
EFLHD DETAIL	
16 FEET AND 28 FEET GATES Sheet 2 of 2	
DETAIL APPROVED FOR USE APPROVED: MAY 2011 REVISED: SEPTEMBER 2020	DETAIL E619-04