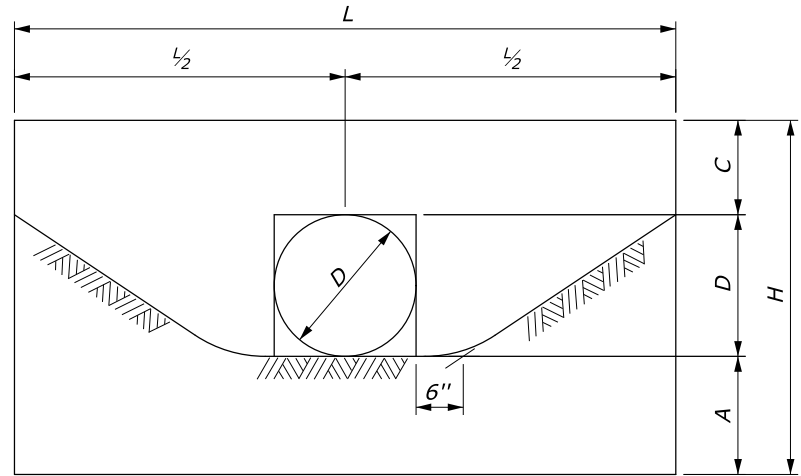
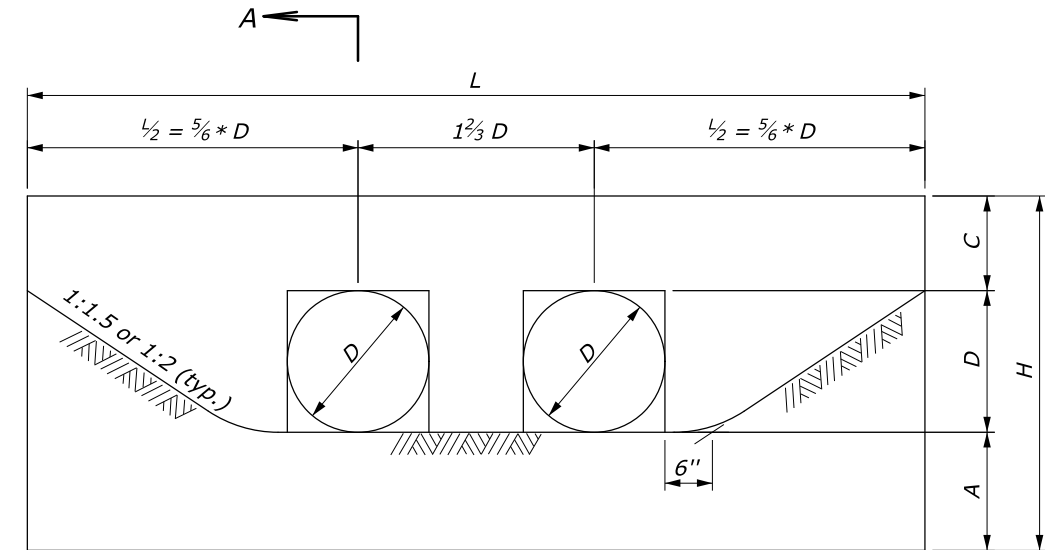


**NOTES:**

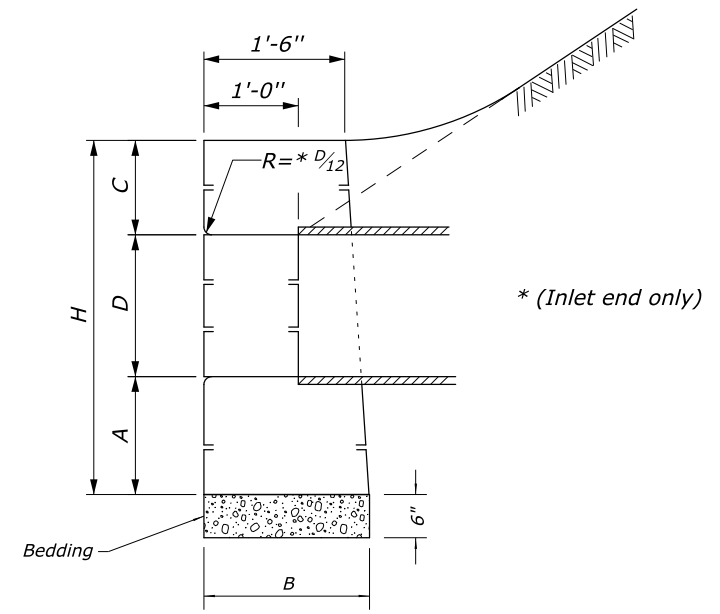
1. All headwalls are oriented parallel to the roadway centerline unless otherwise indicated on the plans or by the CO.
2. When pipes are on skew, adapt and lengthen headwalls as directed.
3. Quantities shown in the Table are for one headwall with pipe at right angles.
4. Construct headwalls using dimensions shown under values for 1½ :1 slope, unless otherwise designated by the CO.



**SINGLE**



**DOUBLE**



**SECTION A-A**

	VALUES FOR 1½:1 SLOPES								VALUES FOR 2:1 SLOPES							
	SINGLE				DOUBLE				SINGLE				DOUBLE			
D (In.)	18"	24"	30"	36"	18"	24"	30"	36"	18"	24"	30"	36"	18"	24"	30"	36"
L or L'	7'-0"	10'-0"	13'-0"	16'-0"	9'-6"	13'-4"	17'-2"	21'-0"	8'-6"	12'-4"	16'-2"	20'-0"	11'-0"	15'-8"	20'-4"	25'-0"
H	3'-9"	4'-10"	5'-11"	7'-0"	3'-9"	4'-10"	5'-11"	7'-0"	3'-9"	4'-10"	5'-11"	7'-0"	3'-9"	4'-10"	5'-11"	7'-0"
B	1'-9"	2'-0"	2'-5"	2'-10"	1'-9"	2'-0"	2'-5"	2'-10"	1'-9"	2'-0"	2'-5"	2'-10"	1'-9"	2'-0"	2'-5"	2'-10"
A (min.)	1'-3"	1'-6"	1'-9"	2'-0"	1'-3"	1'-6"	1'-9"	2'-0"	1'-3"	1'-6"	1'-9"	2'-0"	1'-3"	1'-6"	1'-9"	2'-0"
C	1'-0"	1'-4"	1'-8"	2'-0"	1'-0"	1'-4"	1'-8"	2'-0"	1'-0"	1'-4"	1'-8"	2'-0"	1'-0"	1'-4"	1'-8"	2'-0"
Stone (CY)	1.45	2.87	5.14	8.28	1.89	3.66	6.47	10.37	1.78	3.60	6.50	10.53	2.22	4.39	7.83	12.62

NO SCALE

U.S. DEPARTMENT OF TRANSPORTATION FEDERAL HIGHWAY ADMINISTRATION OFFICE OF FEDERAL LANDS HIGHWAY	
EFLHD DETAIL	
<b>STONE MASONRY HEADWALLS          FOR SMALL PIPE CULVERTS</b>	
DETAIL APPROVED FOR USE APPROVED: MAY 2011 REVISED: SEPTEMBER 2020	DETAIL <b>E620-01</b>