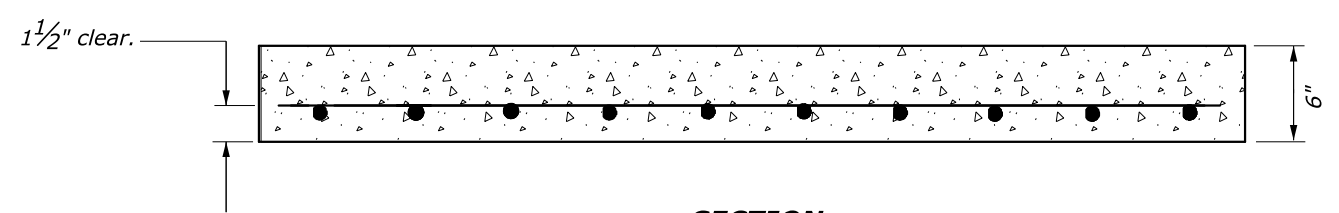


PLAN



SECTION

NOTES:

1. Set concrete cap on a 2" mortar bed
2. Field measure the length and width of the caps to complete cover the existing inlets.
3. Cut the top of the existing inlets to a depth such that 6 inches remain above the highest existing culvert tying into the inlet.
4. All reinforcing bars are to have a 1 1/2" clearance to the outside face.

01-Dec-2014 04:29 PM \$TIME\$ H:\Team_Folders\VIDU\VP_14_Detail_Review\ALL_FPI4_DGN\60408_detail.dgn

NO SCALE

U.S. DEPARTMENT OF TRANSPORTATION FEDERAL HIGHWAY ADMINISTRATION EASTERN FEDERAL LANDS HIGHWAY DIVISION	
U.S. CUSTOMARY DETAIL	
PRECAST CONCRETE INLET CAP	
DETAIL APPROVED FOR USE	DETAIL
<small>APPROVED: MAY 2011 REVISED: SEPTEMBER 2014</small>	E604-08