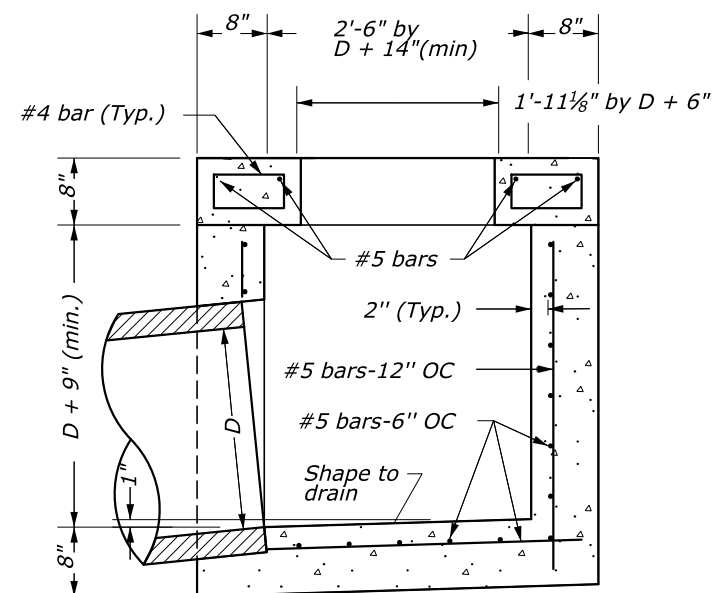


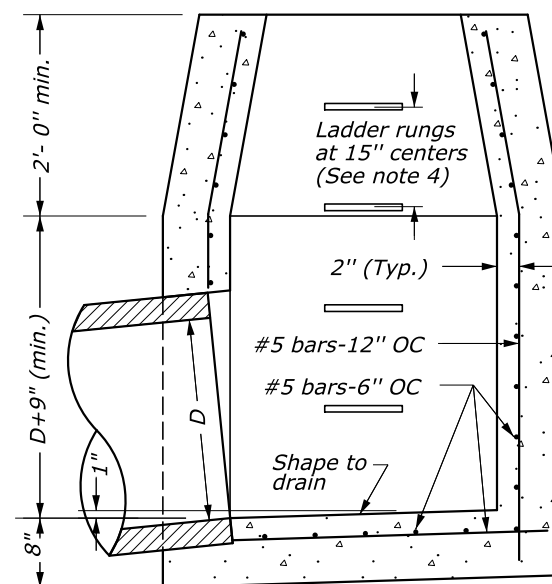
**PLAN VIEW**

**NOTES:**

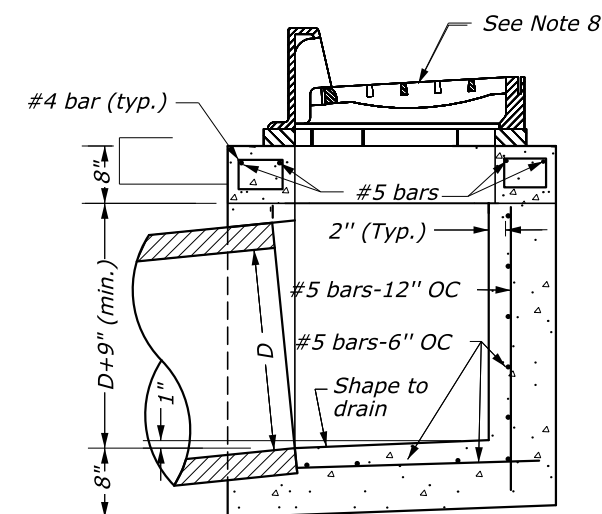
1. At the option of the Contractor, walls less than 4 feet in depth may be of either concrete block or concrete as shown.
2. Construct Type 6A-6 inlets for 24-inch pipes and larger for "Limited Headroom", unless otherwise directed by the CO.
3. Construct inlets parallel to the roadway centerline and grade. For pipes on skew, adjust inlets as directed by the CO.
4. Construct ladder rungs of 3/4-inch round or 3/4-inch square steel or wrought iron where depth exceeds feet.
5. Minor variations in design and dimensions for frames and grating are permitted to allow manufacturers standards. Ensure all grates are bicycle safe.
6. Orient curved vanes toward direction of stormwater flow. In a sump condition, orient curved vanes in either direction. Ensure all grates are correctly oriented towards stormwater flow.
7. Construct Type 6A-6 metal frame and grating for 6-inch reveal, unless otherwise directed by the CO.
8. See Sheet 2 of 2 for metal frame and grate (Curved Vane Grate) details.



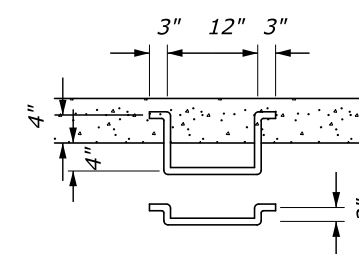
**SECTION A-A**  
Limited Headroom



**SECTION A-A**  
Ample Headroom



**SECTION A-A**



**LADDER RUNG**  
See Note 4

**INLET, TYPE 6A-6**  
(For 24" or larger pipes)

**INLET, TYPE 6A-6**  
(For up to 24" pipes)

U.S. DEPARTMENT OF TRANSPORTATION  
FEDERAL HIGHWAY ADMINISTRATION  
EASTERN FEDERAL LANDS HIGHWAY DIVISION

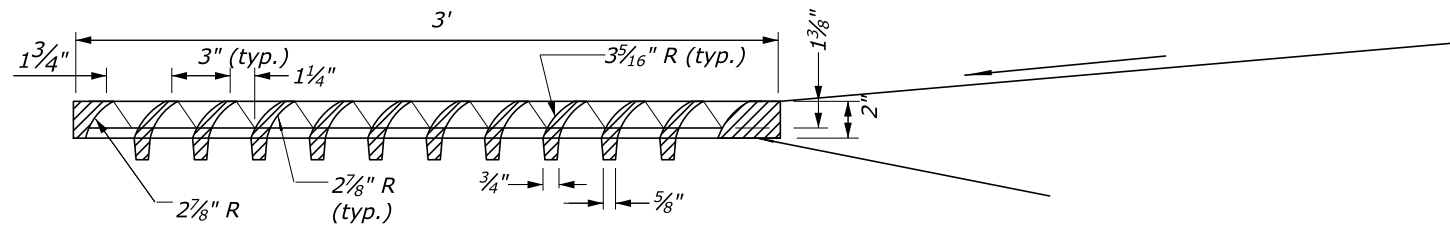
U.S. CUSTOMARY DETAIL

**INLET, TYPE 6A-6**  
Sheet 1 of 2

NO SCALE

DETAIL APPROVED FOR USE  
APPROVED: MAY 2011  
REVISED: NOVEMBER 2021

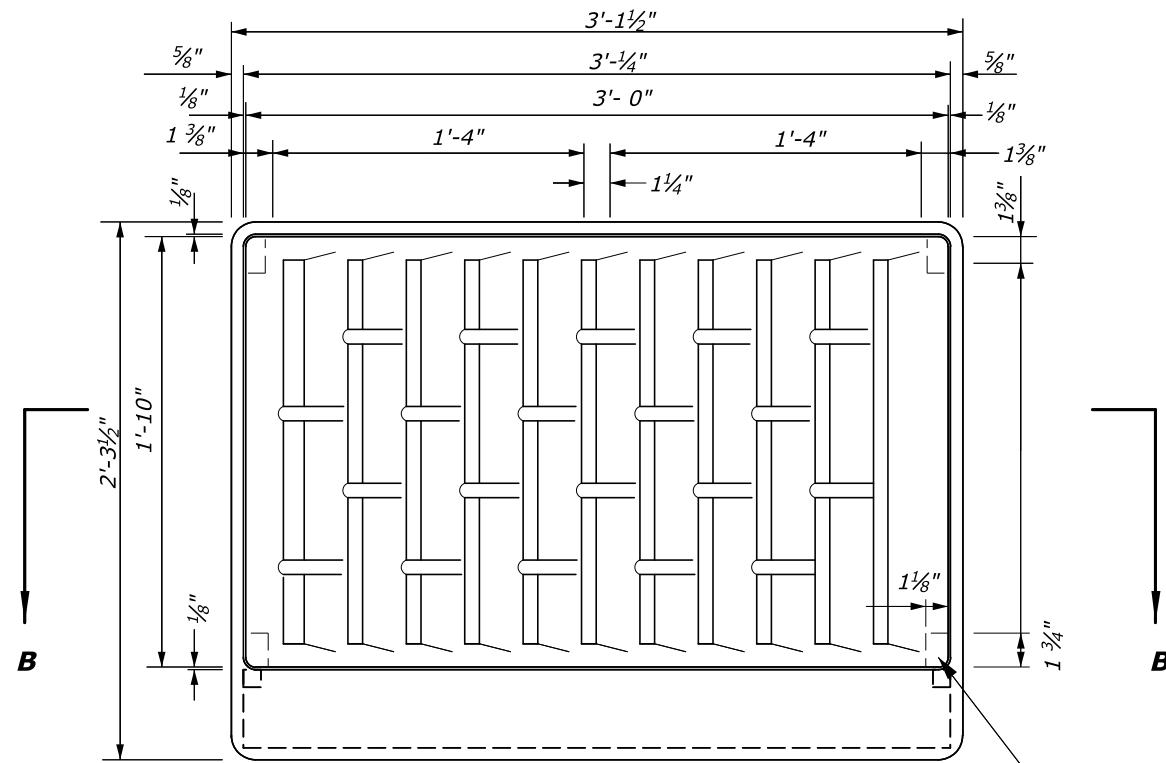
DETAIL  
E604-09



**FRONT ELEVATION GRATE TYPE 6A-6 MOUNTED (CURVED VANE GRATINGS)**

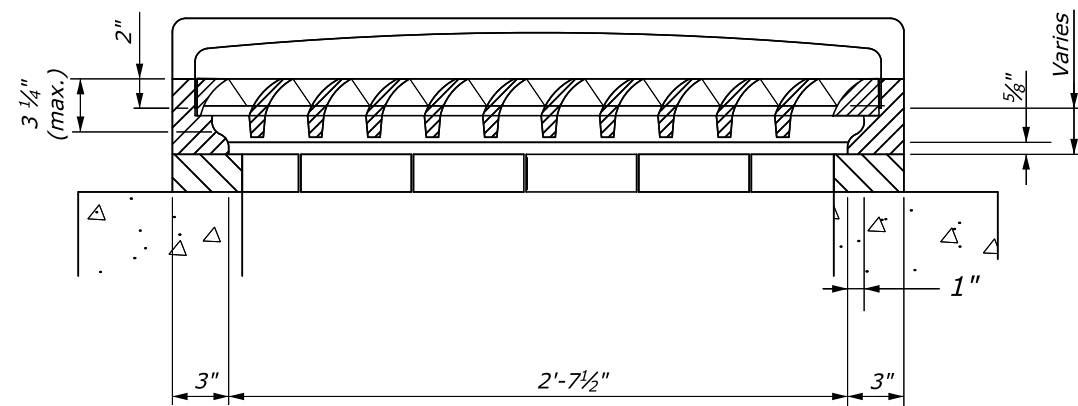
**NOTES:**

1. Minor variations in design and dimensions for frames and grating are permitted to allow manufacturer's standards. Ensure all grates are bicycle safe.
2. Orient curved vanes toward direction of stormwater flow. In a sump condition, orient curved vanes in either direction. Ensure all grates are correctly oriented towards stormwater flow.



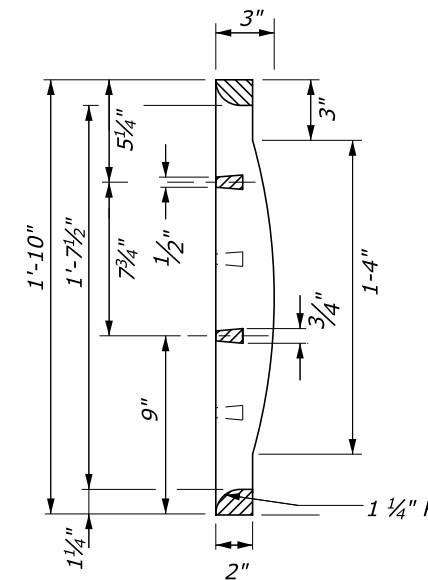
(4) Position notches

**TOP VIEW FRAME GRATE TYPE 6A-6 MODIFIED (CURVED VANE GRATINGS)**

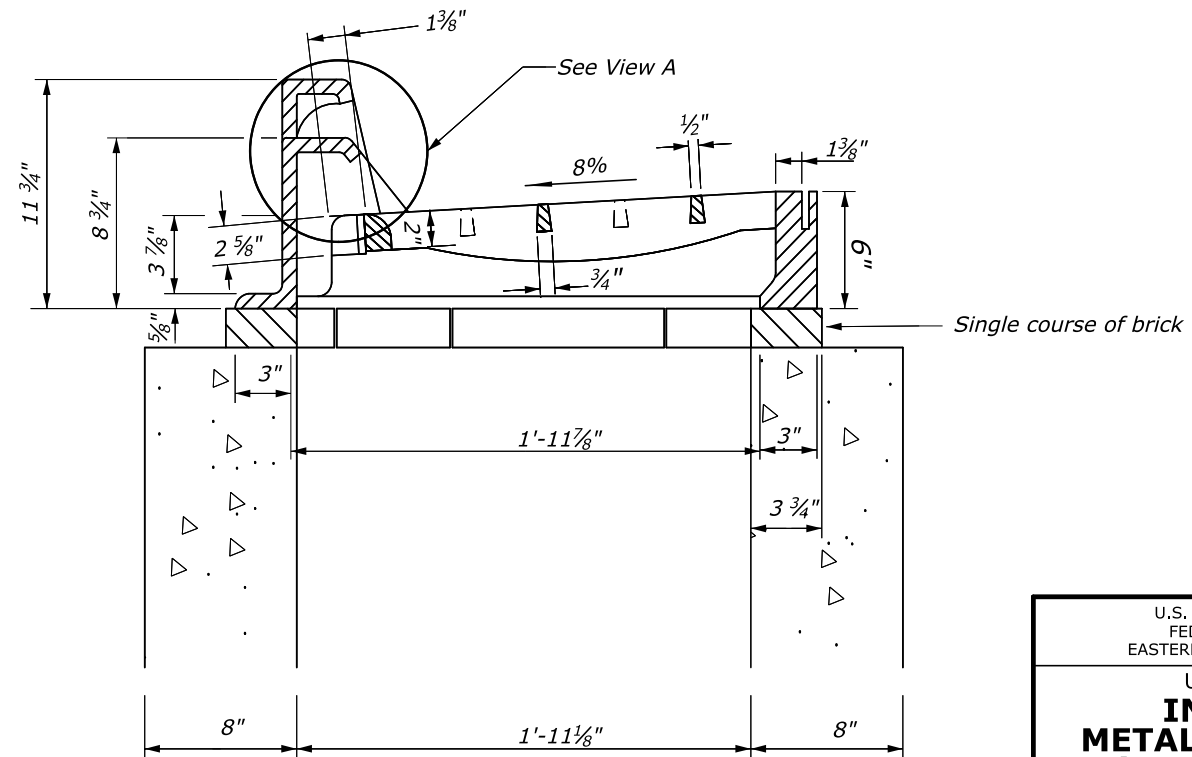
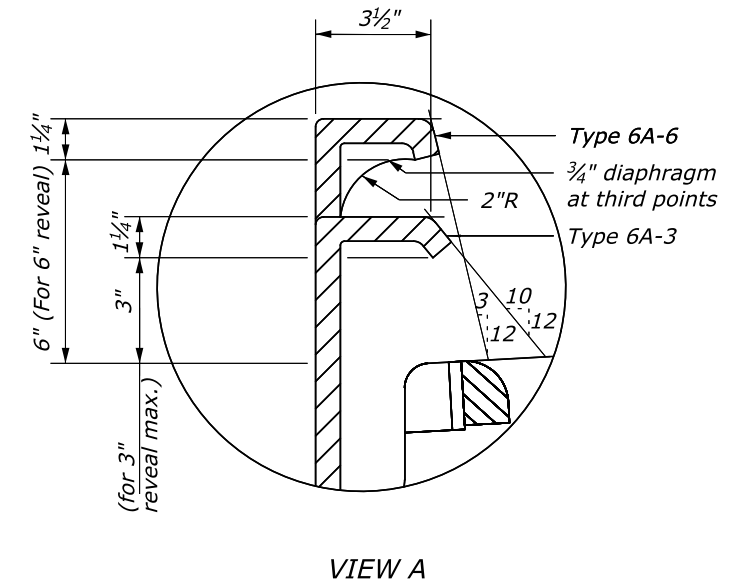


SECTION B-B

**METAL FRAMES AND GRATING TYPE 6A-6 MODIFIED**



**SIDE ELEVATION GRATE TYPE 6A-6 MODIFIED (CURVED VANE GRATINGS)**



NO SCALE

U.S. DEPARTMENT OF TRANSPORTATION FEDERAL HIGHWAY ADMINISTRATION EASTERN FEDERAL LANDS HIGHWAY DIVISION	
U.S. CUSTOMARY DETAIL <b>INLET, TYPE 6A-6 METAL FRAME AND GRATE, (CURVED VANE GRATE)</b> Sheet 2 of 2	
DETAIL APPROVED FOR USE APPROVED: MAY 2011 REVISED: NOVEMBER 2021	DETAIL E604-09