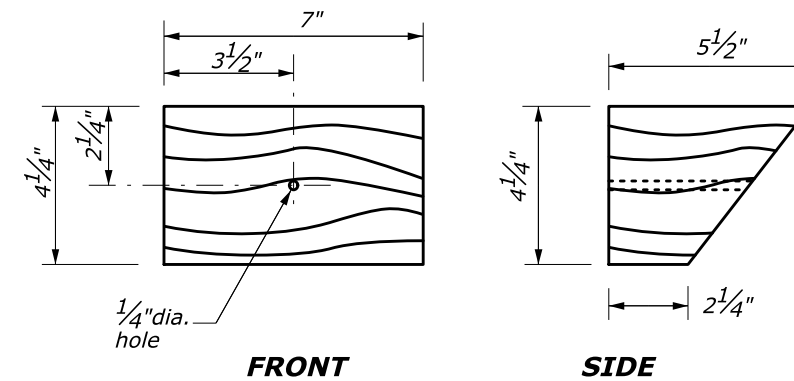
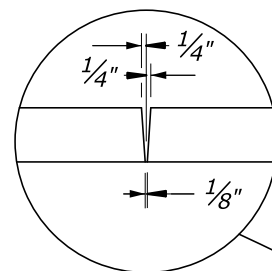
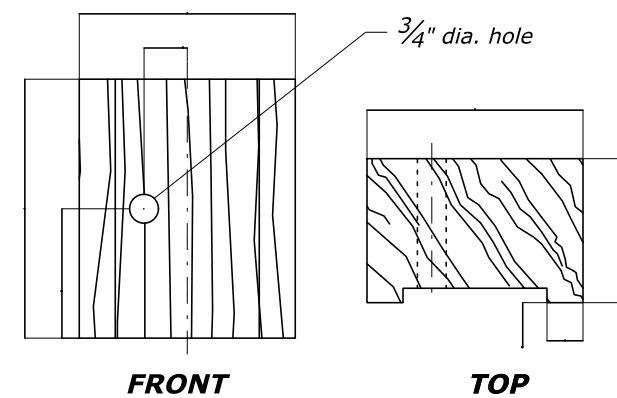


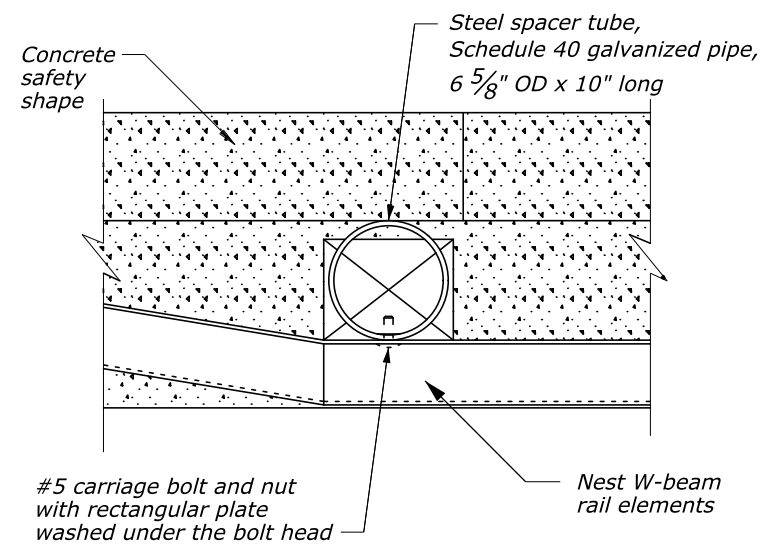
**BENT PLATE RUBRAIL**



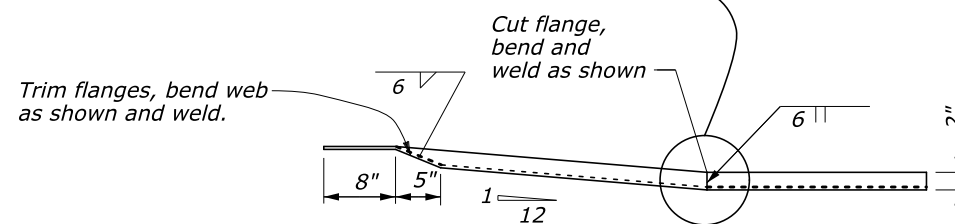
**WOOD BLOCKOUT FOR RUBRAIL ON CONCRETE SAFETY SHAPE**



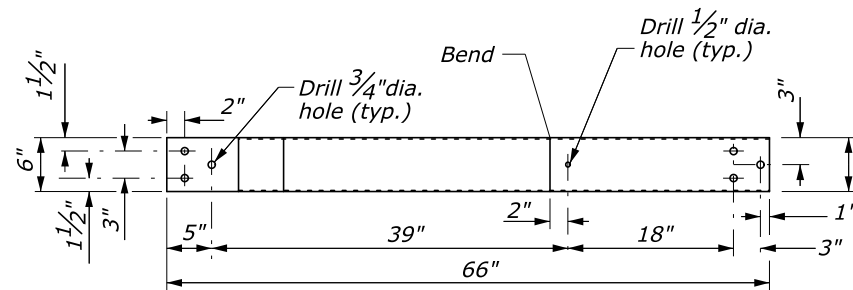
**WOOD BLOCKOUT FOR RUBRAIL ON STEEL POSTS**



**STEEL SPACER BLOCK**



**C6" X 1/2" RUBRAIL**



**NOTES:**

1. Attach rubrail end flush with sloped toe of safety shape. Shop fabricate the C6" x 1/2" rubrail end to be consistent with the slope of safety shape. Both clockwise and counter clockwise fabrications may be required.

2. Dimensional tolerances not shown on implied are intended to be those consistent with the proper functioning of the part, including its appearance, and accepted manufacturing practices.

01-Dec-2014 02:32 PM 471ME\$ H:\Team\_Folders\VIDU\VP\_14\_Detail\_Review\ALL\_FPI4\_D01\561729\_detail.dgn

U.S. DEPARTMENT OF TRANSPORTATION FEDERAL HIGHWAY ADMINISTRATION EASTERN FEDERAL LANDS HIGHWAY DIVISION	
U.S. CUSTOMARY DETAIL	
<b>G4 BEAM GUARDRAIL CONNECTION TO STRUCTURE SAFETY SHAPE FACE RUBRAIL</b>	
DETAIL APPROVED FOR USE	DETAIL
APPROVED: MAY 2011 REVISED: SEPTEMBER 2014	E617-29