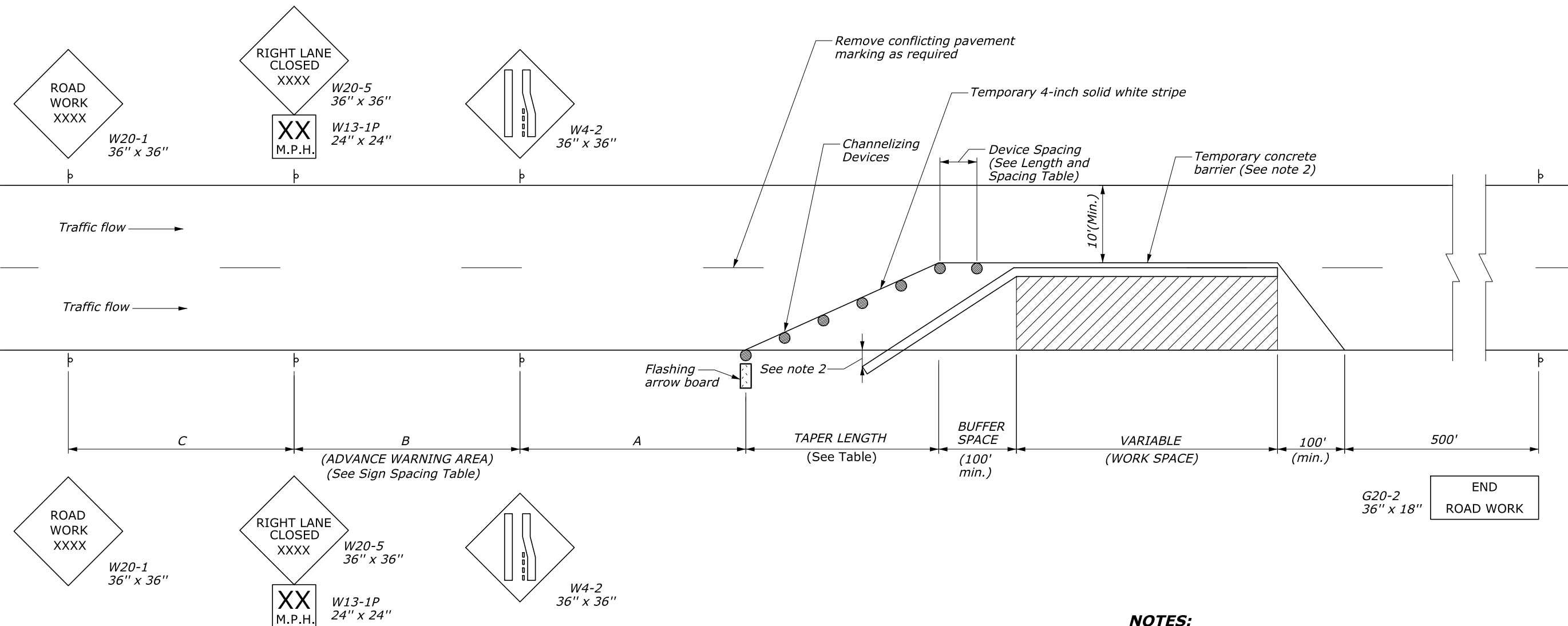


TYPICAL APPLICATION: ONE WAY, TWO LANE ROADWAY, CLOSING ONE LANE, USING TEMPORARY BARRIER



NOTES:

- Final location and spacing of signs and devices may be changed to fit field conditions as approved by the CO.
- Barrier placement is in accordance with the Roadside Design Guide, latest edition, by the American Association of State Highway and Transportation Officials (AASHTO). Terminate barrier ends outside the clearzone or protect the ends of the barrier with an impact attenuator. Include reflectors on barriers at 25' intervals.
- Right lane closure is shown. For left lane closure, substitute with W20-5 and W4-2 left lane closure signs.
- Use minimum width shown unless otherwise specified in Section 156 of the Special Contract Requirements.

LENGTH AND SPACING TABLE

APPROACH SPEED (MPH)	MINIMUM TAPER LENGTH (FT)			CHANELIZING DEVICE SPACING (FT.)		CONCRETE BARRIER FLARE RATE
	LANE WIDTH			TAPER AREA	WORK AREA	
	10 ft.	11 ft.	12 ft.			
25	105	115	125	25	50	6.5 : 1
30	150	165	180	30	60	8 : 1
35	205	225	245	35	70	9.3 : 1
40	270	295	320	40	80	10.6 : 1
45	450	495	540	45	90	12 : 1
50	500	550	600	50	100	13.5 : 1
55	550	605	660	55	100	15 : 1

* Approach speed based on the regulatory posted speed, not the advisory speed.

ADVANCE WARNING SIGN SPACING CHART

POSTED SPEED LIMIT (MPH)	Recommended Distance Between Signs (feet)		
	A	B	C
≤35	200	200	200
40-50	350	350	350
55	500	500	500
Expressway/Urban Parkway	1000	1600	2600

NO SCALE

U.S. DEPARTMENT OF TRANSPORTATION FEDERAL HIGHWAY ADMINISTRATION EASTERN FEDERAL LANDS HIGHWAY DIVISION	
U.S. CUSTOMARY DETAIL	
CONSTRUCTION TRAFFIC CONTROL	
SINGLE LANE CLOSURE LAYOUT	
(WITH TEMPORARY CONCRETE BARRIER)	
DETAIL APPROVED FOR USE	DETAIL
APPROVED : MAY 2011 REVISED : SEPTEMBER 2014	E635-12