

NOTES:

1. For periods as noted in Table A, pavement may be unmarked if appropriate temporary pavement markers are provided.
2. Typical spacing between flexible pavement markers is 40 feet as shown. In areas of severe curvature, use a spacing of 20 feet. Areas of severe curvature are shown in the plans or provided in the Temporary Pavement Markings Schedule.
3. See Subsection 718.16(b) requirements for flexible pavement markers.
4. When ADT > 1000 and special hazards are present, supplement the R4-1 sign at the beginning of each no passing zone with a W14-3 sign mounted on the left of the roadside.
5. Repeat R4-1 at 3,000 foot intervals minimum.

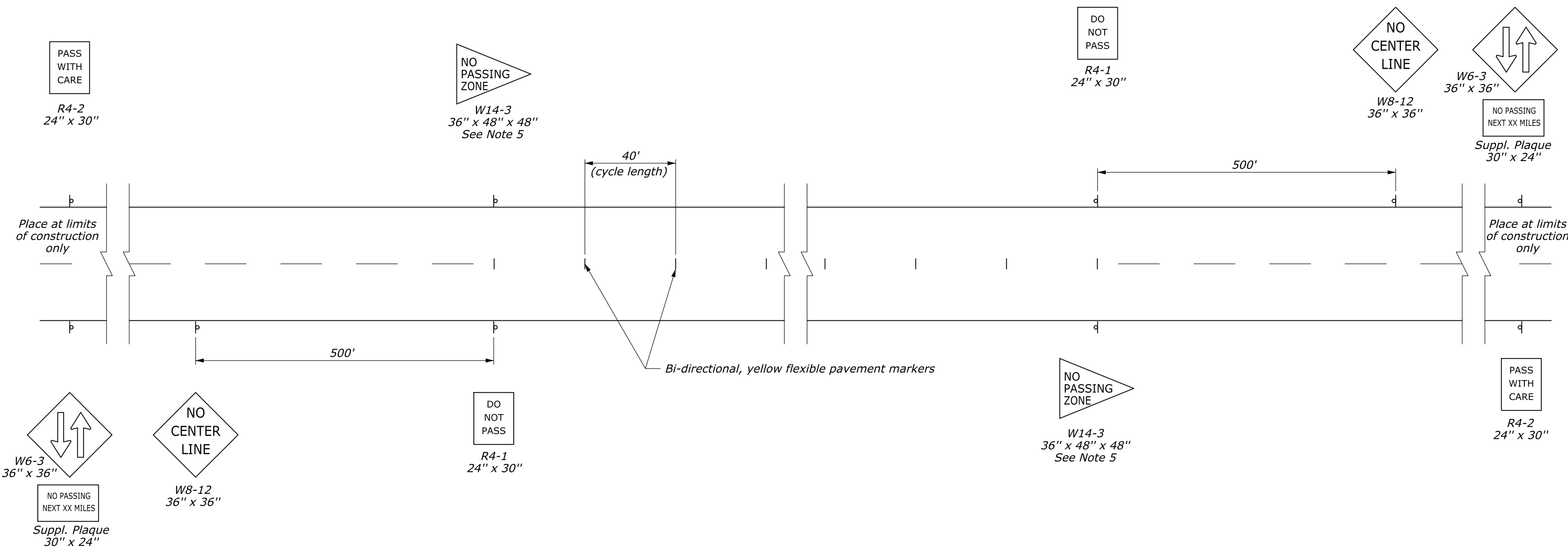


TABLE A	
ADT	MAXIMUM DURATION BEFORE MARKINGS ARE REQUIRED
≤ 1000	14 Days
> 1000	3 Days

U.S. DEPARTMENT OF TRANSPORTATION
FEDERAL HIGHWAY ADMINISTRATION
EASTERN FEDERAL LANDS HIGHWAY DIVISION

U.S. CUSTOMARY DETAIL

**FLEXIBLE PAVEMENT MARKERS
FOR TEMPORARY USE WITH
UNMARKED PAVEMENTS**

DETAIL APPROVED FOR USE

APPROVED : AUGUST 2014
REVISED : AUGUST 2015

DETAIL
E635-14

NO SCALE