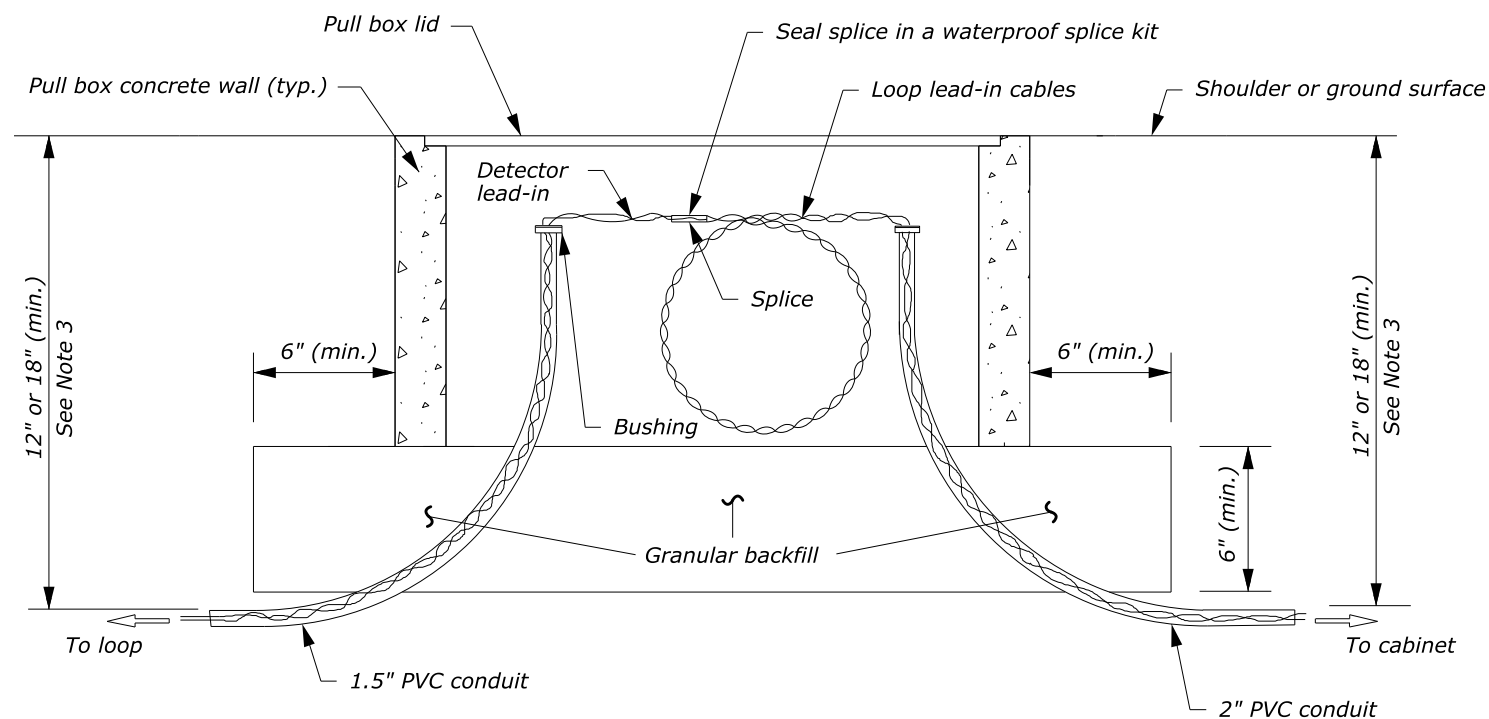
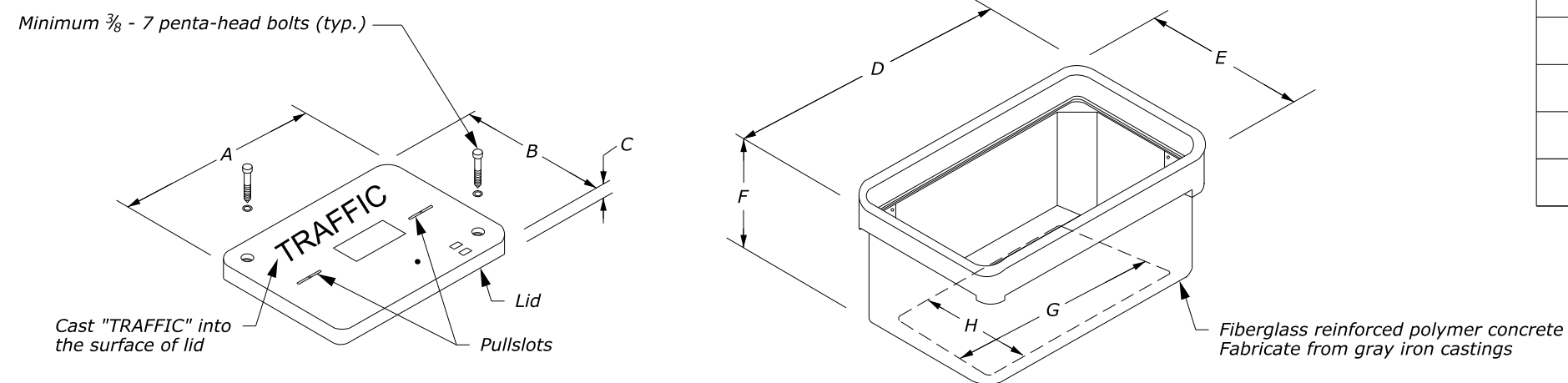


**NOTES:**

1. Install pull boxes flush with the shoulder surface. Restore the disturbed area around the pull box and conduit installations.
2. On long runs, install pull boxes such that each box is separated by no more than 150 feet.
3. If cabinet is located more than 30 feet from the edge of travelway, provide a minimum cover of 12 inches. Otherwise, provide a minimum cover of 18 inches.
4. Terminate stranded conductors smaller than #14 AWG with crimp style terminal lugs.
5. Size pull box according to the National Electric Code (NEC) as approved by the CO.
6. Ensure splices occur only in pull box nearest to the inductive loops.
7. Plug conduits and bushings with steel wool to prevent rodent entry and with a water resistant material to prevent moisture entry.



**PULL BOX INSTALLATION**



**PULL BOX ISOMETRIC VIEW**

**PULL BOX DIMENSIONS TABLE**

TYPE	MINIMUM DIMENSIONS INCH							
	(A)	(B)	(C)	(D)	(E)	(F)	(G)	(H)
1	15 3/8	10	1 3/4	17 5/8	12 3/8	12	13 5/8	8 3/8
2	12 7/8	12 7/8	1 3/4	14 3/4	14 3/4	12	12	12
3	18 1/8	11 1/4	1 3/4	20 1/4	13 3/8	12	15 3/4	8 7/8
4	23 1/4	13 3/4	2	25	15 1/2	12	19 1/4	9 3/4

NO SCALE

U.S. DEPARTMENT OF TRANSPORTATION  
 FEDERAL HIGHWAY ADMINISTRATION  
 EASTERN FEDERAL LANDS HIGHWAY DIVISION

U.S. CUSTOMARY DETAIL

**INDUCTIVE LOOP  
 PULL BOX**

DETAIL APPROVED FOR USE

APPROVED: MARCH 2015  
 REVISED: JANUARY 2019

DETAIL  
 E636-04