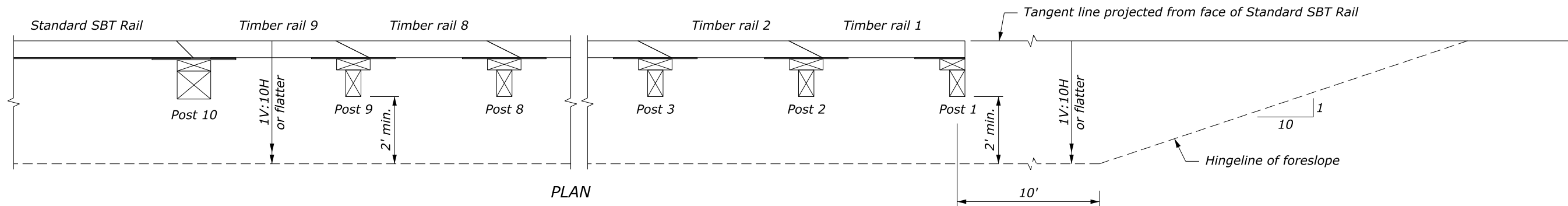
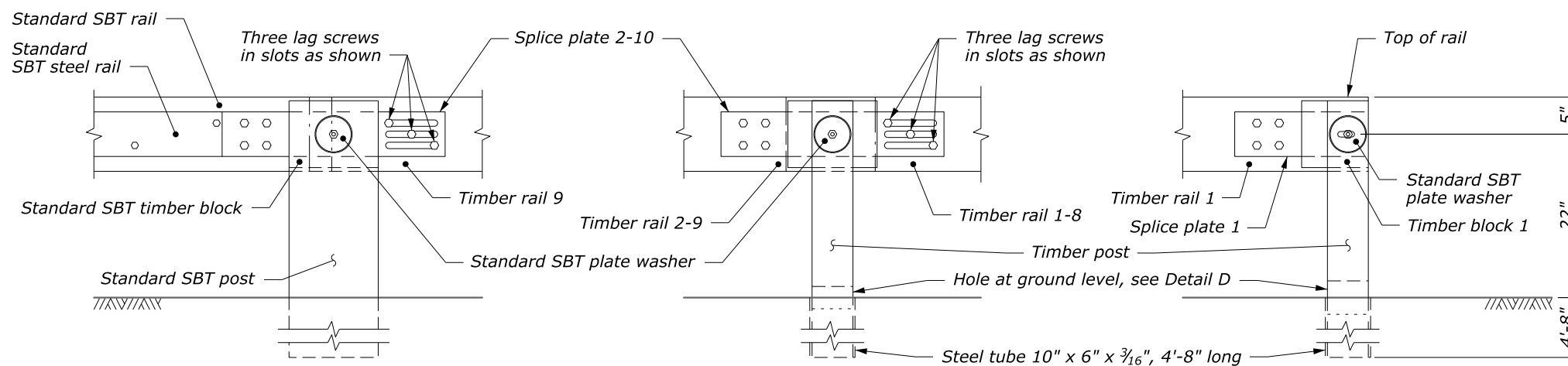


ELEVATION

**NOTE:**  
See Standard 617-60 for standard SBT guardrail details.



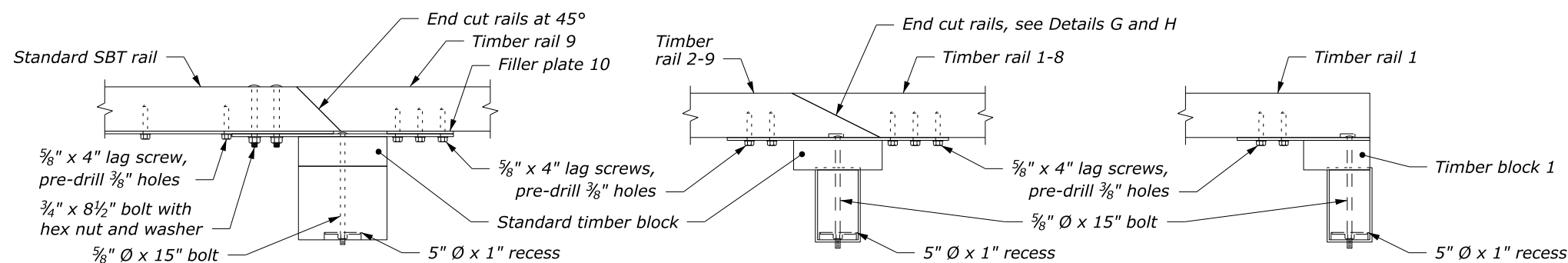
PLAN



ELEVATION

ELEVATION

ELEVATION



PLAN

PLAN

PLAN

**POST/RAIL CONNECTION  
AT POST 10  
DETAIL A**

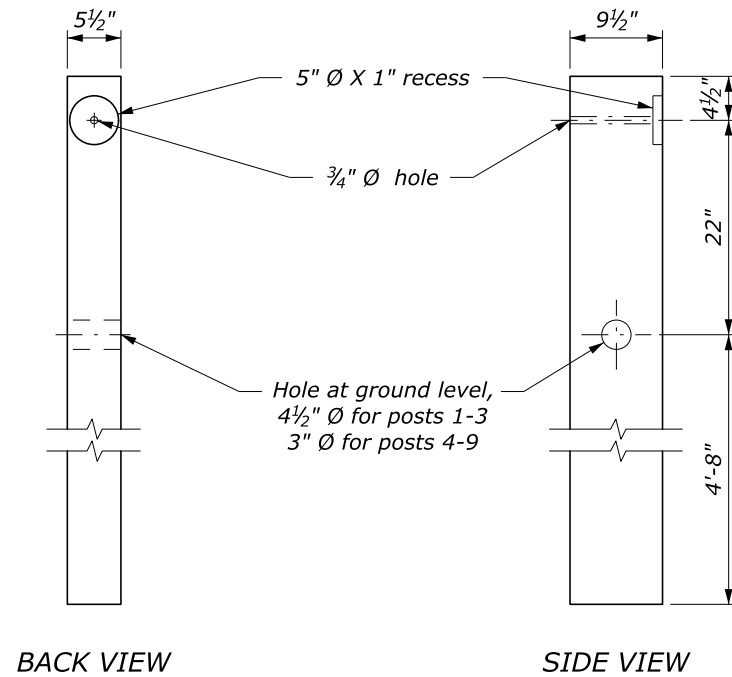
**POST/RAIL CONNECTION  
AT POSTS 2-9  
DETAIL B**

**POST/RAIL CONNECTION  
AT POST 1  
DETAIL C**

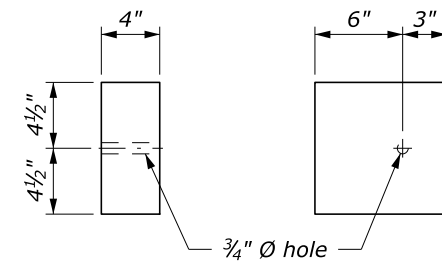
NO SCALE

U.S. DEPARTMENT OF TRANSPORTATION FEDERAL HIGHWAY ADMINISTRATION EASTERN FEDERAL LANDS HIGHWAY DIVISION	
U.S. CUSTOMARY DETAIL <b>TL-2 END TERMINAL FOR STEEL-BACKED TIMBER GUARDRAIL</b> Sheet 1 of 2	
STANDARD APPROVED FOR USE --/----	DETAIL
REVISED: 4/2016, 1/2018	ET 617-69

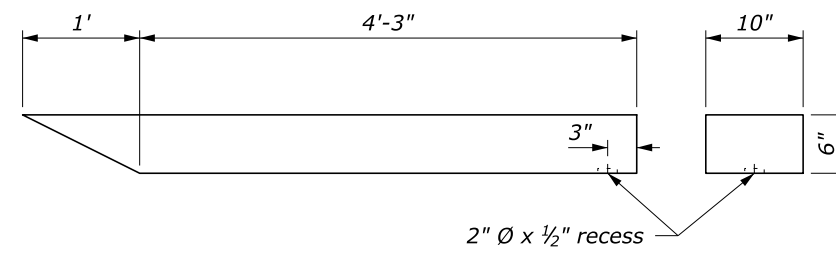
**NOTE:**  
Use the weathering steel for all steel backing plates and fastener hardware.



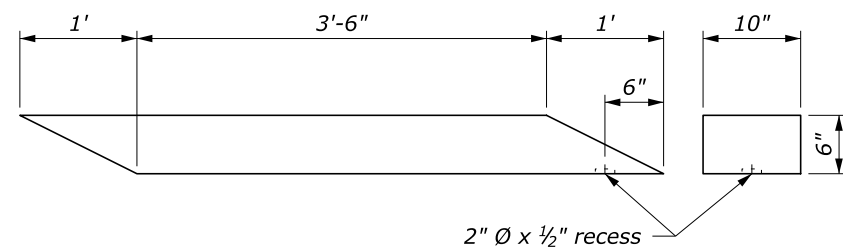
**TIMBER POSTS 1 - 9**  
DETAIL D



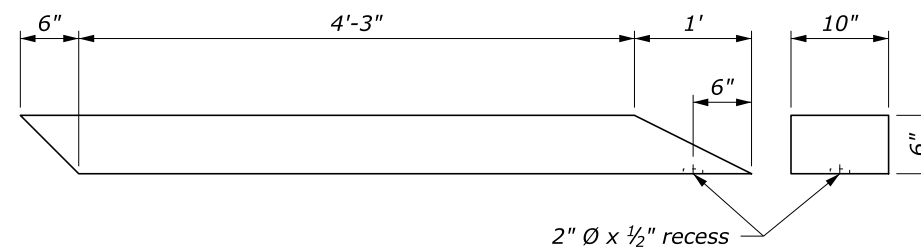
**TIMBER BLOCK 1**  
DETAIL E



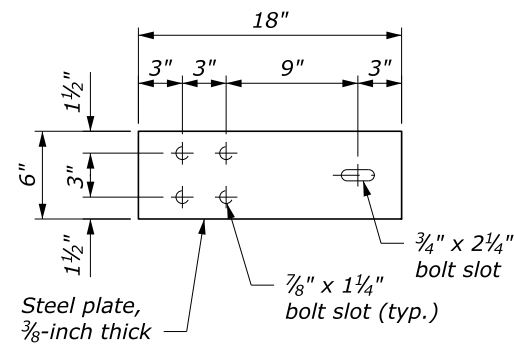
**TIMBER RAIL 1**  
DETAIL F



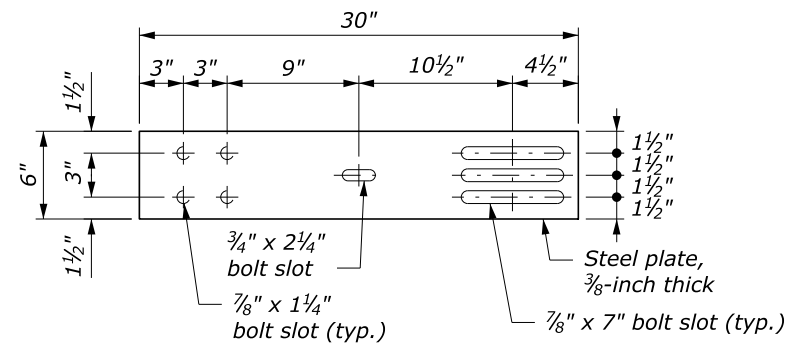
**TIMBER RAILS 2-8**  
DETAIL G



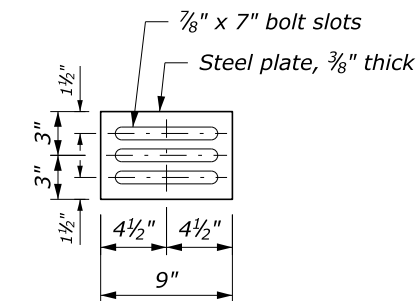
**TIMBER RAIL 9**  
DETAIL H



**SPLICE PLATE 1**  
DETAIL I



**SPLICE PLATE 2-10**  
DETAIL J



**FILLER PLATE 10**  
DETAIL K

NO SCALE

U.S. DEPARTMENT OF TRANSPORTATION FEDERAL HIGHWAY ADMINISTRATION EASTERN FEDERAL LANDS HIGHWAY DIVISION	
U.S. CUSTOMARY DETAIL <b>TL-2 END TERMINAL FOR STEEL-BACKED TIMBER GUARDRAIL</b> Sheet 2 of 2	
STANDARD APPROVED FOR USE --/----	DETAIL
REVISED: 4/2016, 1/2018	ET 617-69