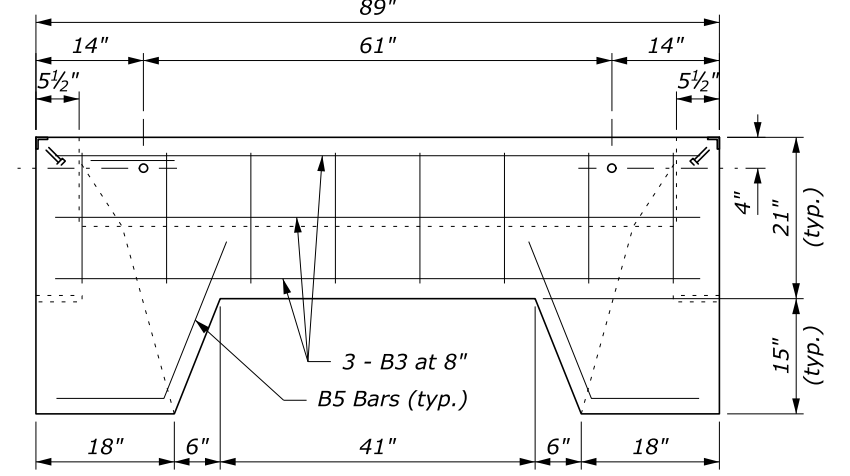
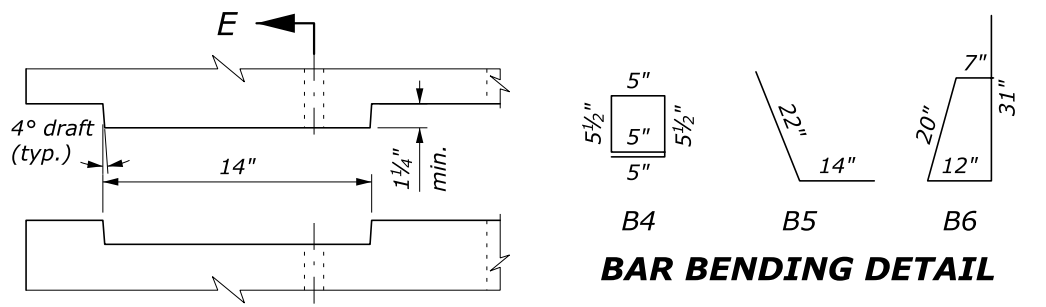


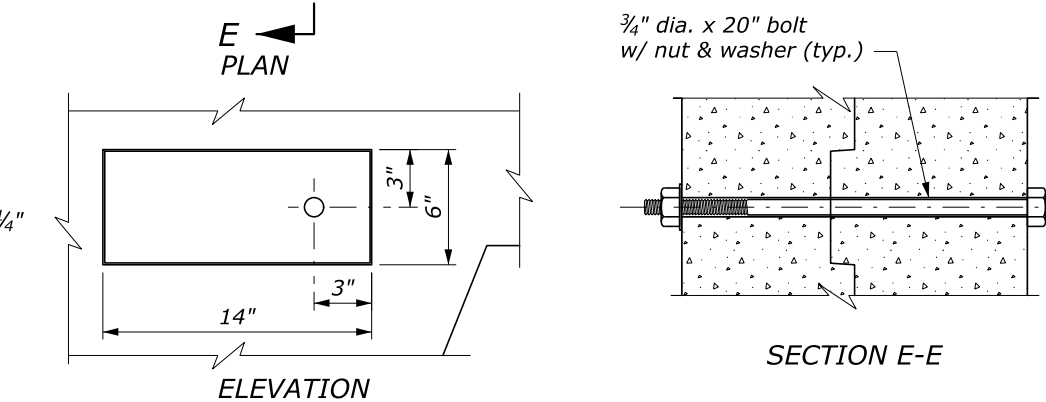
SECTION B-B



SECTION D-D



BAR BENDING DETAIL



KEY DETAIL

NOTES:

1. See Detail ET 619-1 for reinforcing steel size and grade.
2. See Details ET 619-1 and -2 for cattle guard wing details. Fabricate end units to accommodate selected cattle guard wing.
3. Minimum soil bearing 4,000 lb/ft<sup>2</sup>. Place units in fine aggregate bed 3 inch thick over hand leveled soil compacted to not less than 95% density.
4. Chamfer exposed concrete edges 3/4" unless otherwise shown. Give all concrete surfaces a Class 1 finish.
5. Approved alternate designs may be used.

PRECAST CATTLE GUARD					
REINFORCING STEEL AND CONCRETE					
UNIT	No. of BARS	BAR MARK	LENGTH	MASS LB	CONCRETE CUYD
6'-0" END	7	B3	85"	33.1	1.89
	10	B2	74"	41.2	
	8	B1	17"	7.6	
	6	B4	26"	8.7	
	18	B6	70"	70.1	
6'-0" INTERIOR	6	B5	36"	12.0	1.90
	8	B3	85"	37.9	
	10	B2	68"	37.9	
	12	B4	26"	17.4	
	18	B6	70"	70.1	
8'-0" INTERIOR	8	B5	36"	16.0	2.34
	8	B3	85"	37.9	
	10	B2	92"	51.2	
	12	B4	26"	17.4	
	20	B6	70"	77.9	
8'-0" END	7	B3	85"	33.1	2.32
	10	B2	98"	54.6	
	8	B1	17"	7.6	
	6	B4	26"	8.7	
	20	B6	70"	77.9	
6	B5	36"	12.0		

U.S. DEPARTMENT OF TRANSPORTATION  
FEDERAL HIGHWAY ADMINISTRATION  
EASTERN FEDERAL LANDS HIGHWAY DIVISION

U.S. CUSTOMARY DETAIL

**CATTLE GUARD  
PRECAST FOUNDATION**

STANDARD APPROVED FOR USE 6/2005  
REVISED: 6/2008 3/2016 10/2016 2/2021

DETAIL  
ET 619-3

M:\Standards\_and\_Details\EFHLD\_Detail-Drawings\FP-14\FP-14\_ORD\_Version\Working\_Details\ET619-3.dgn [USC] 15 February 2021 7:26 PM