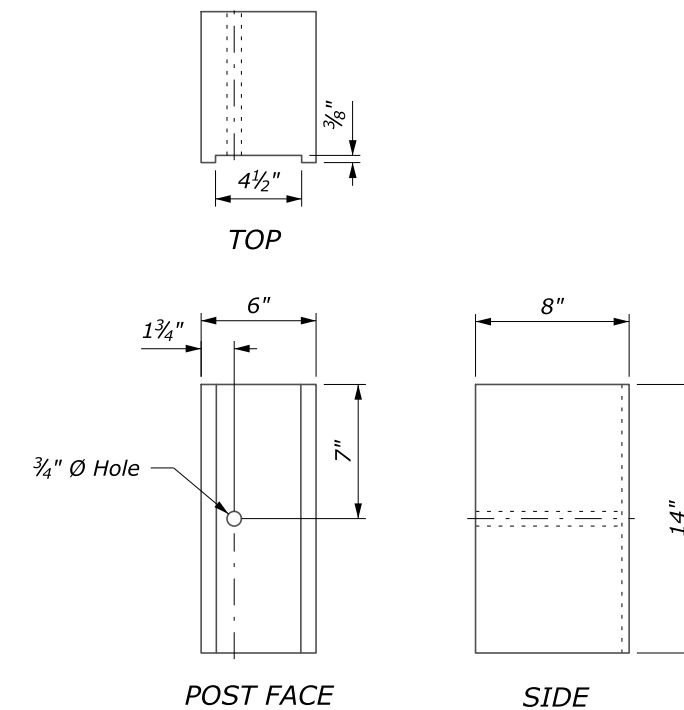
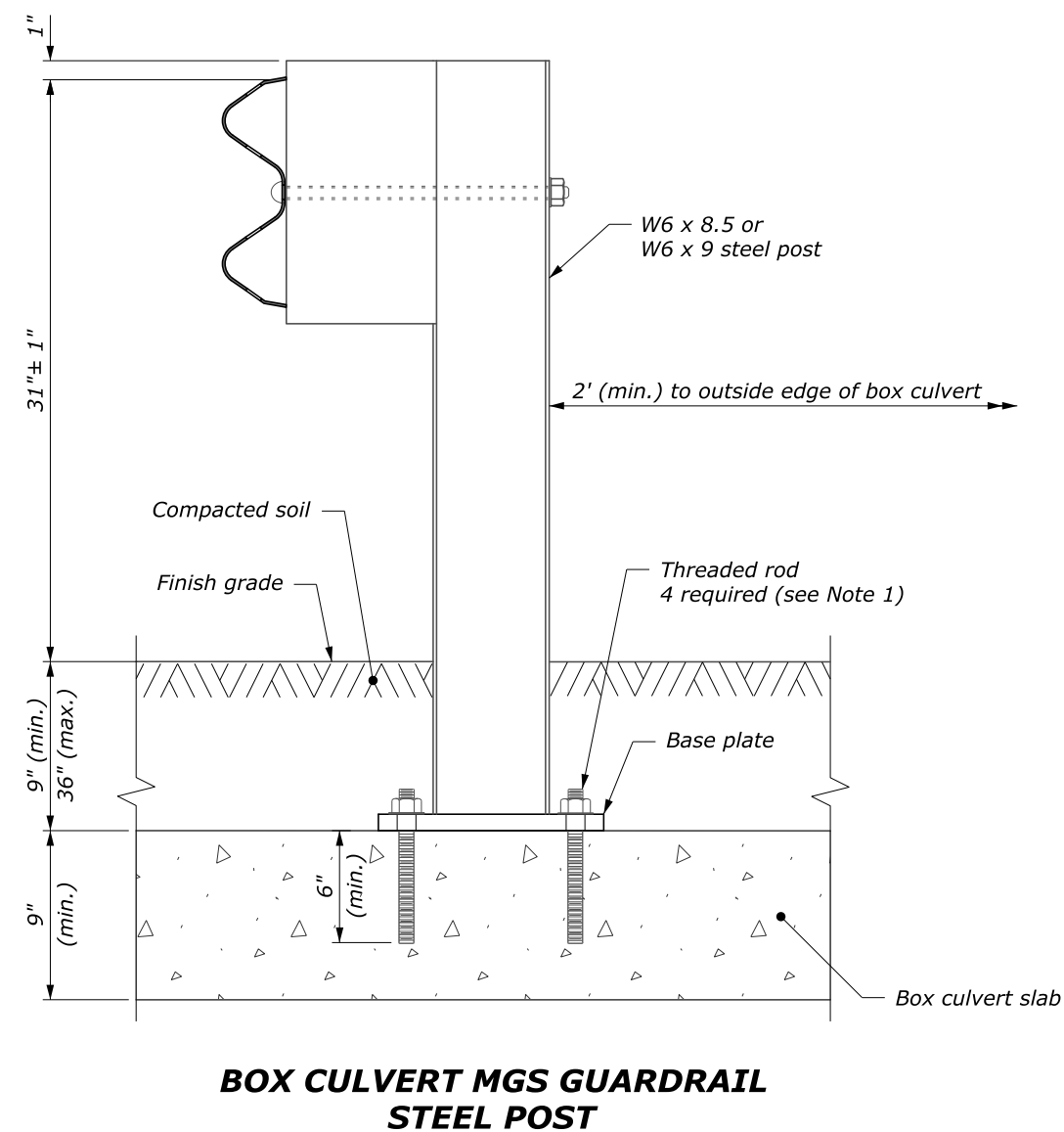
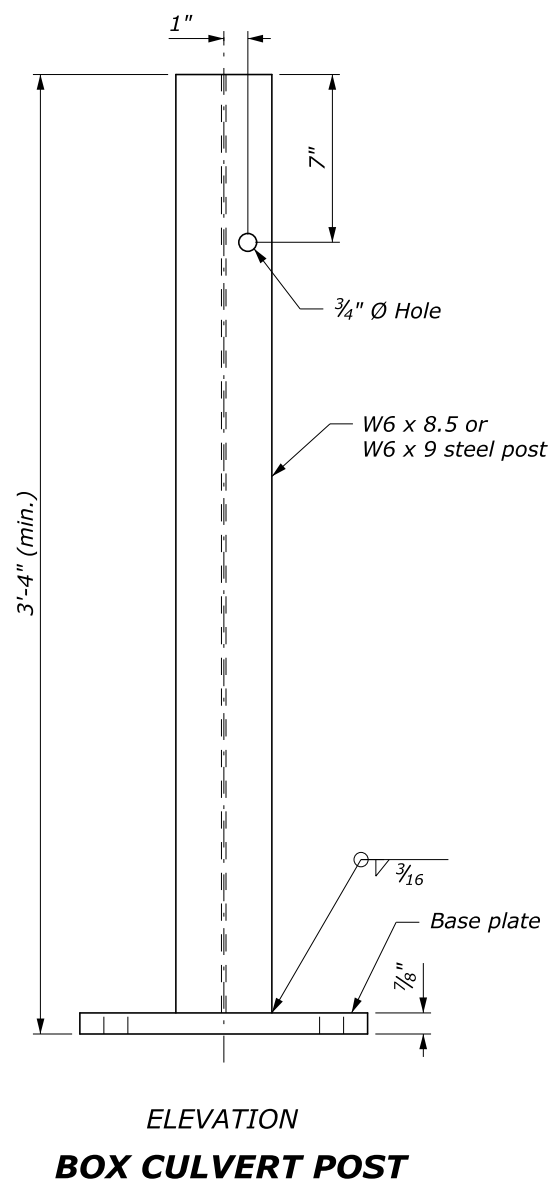


NOTES:

1. Attach guardrail post to box culvert with $\frac{7}{8}$ -inch diameter high-strength threaded rods $8\frac{1}{2}$ -inch in length with resin-bonded anchors. Use carbon steel rods with a minimum strength of 125 ksi and a minimum yield strength of 105 ksi. Furnish rods, nuts, and washers with an electroplated zinc coating.
2. Wood blocks are shown. Blocks of an approved alternative may be used.
3. See Detail ET 617-32 for other details.



NO SCALE

U.S. DEPARTMENT OF TRANSPORTATION FEDERAL HIGHWAY ADMINISTRATION EASTERN FEDERAL LANDS HIGHWAY DIVISION	
U.S. CUSTOMARY DETAIL	
MGS W-BEAM GUARDRAIL STEEL POSTS ATTACHED TO BOX CULVERT	
DETAIL APPROVED FOR USE 2/2019	DETAIL
REVISED: 4/2019 2/2020	ET 617-38