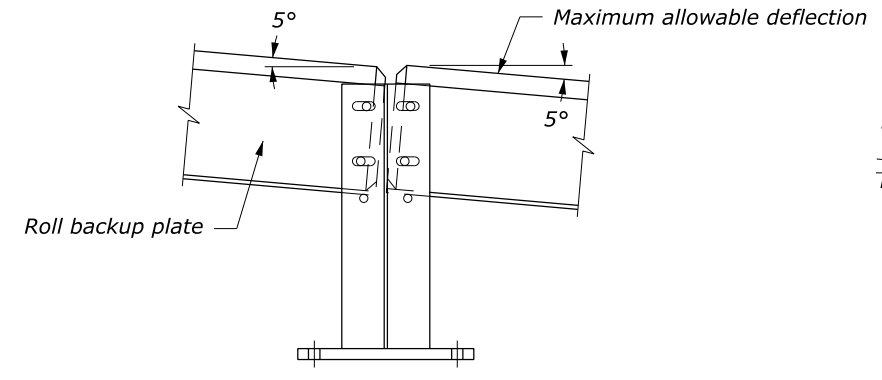


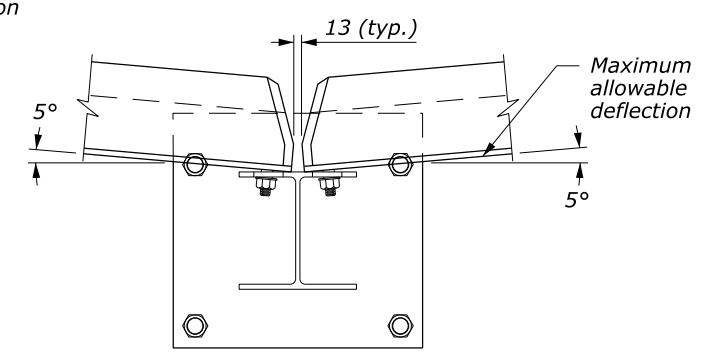
PLAN VIEW

**NOTE:**

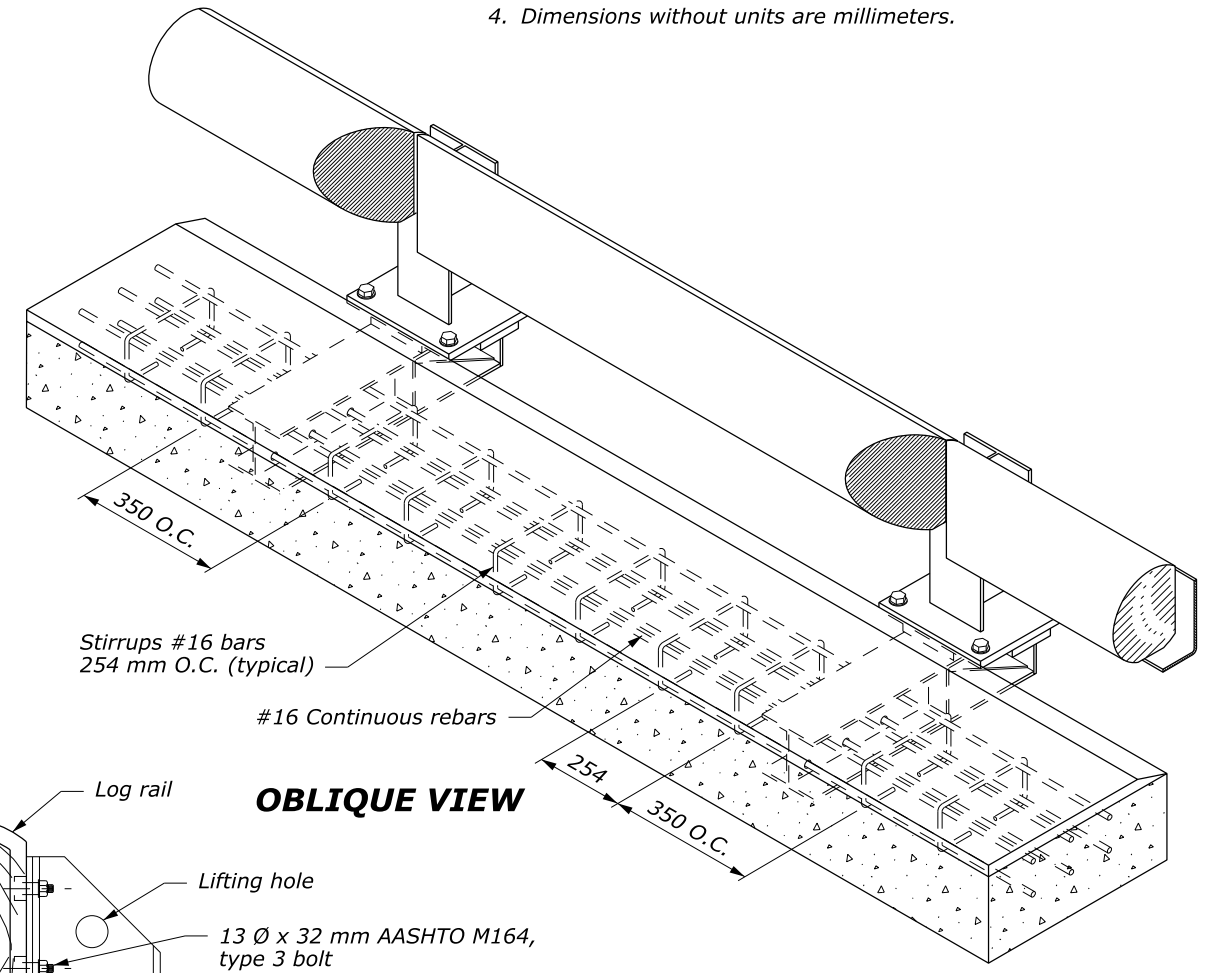
1. Steel is ASTM A242 or A588, Grade 50.
2. Concrete: minimum  $f'_c = 24$  MPa.
3. Furnish hardware in equivalent U.S. Customary sizes.
4. Dimensions without units are millimeters.



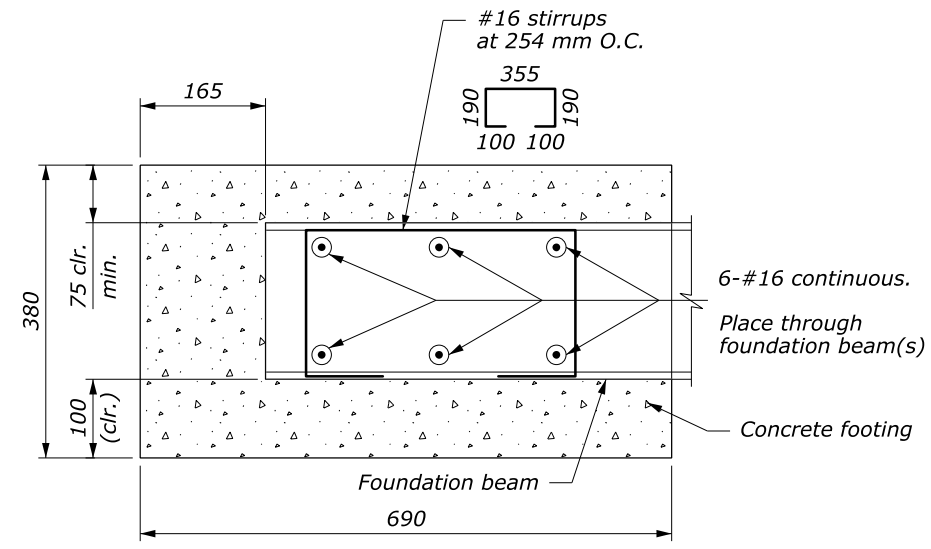
**ENDS OF RAILS AT POST:  
MAXIMUM VERTICAL  
DEFLECTION ALLOWABLE  
ELEVATION**



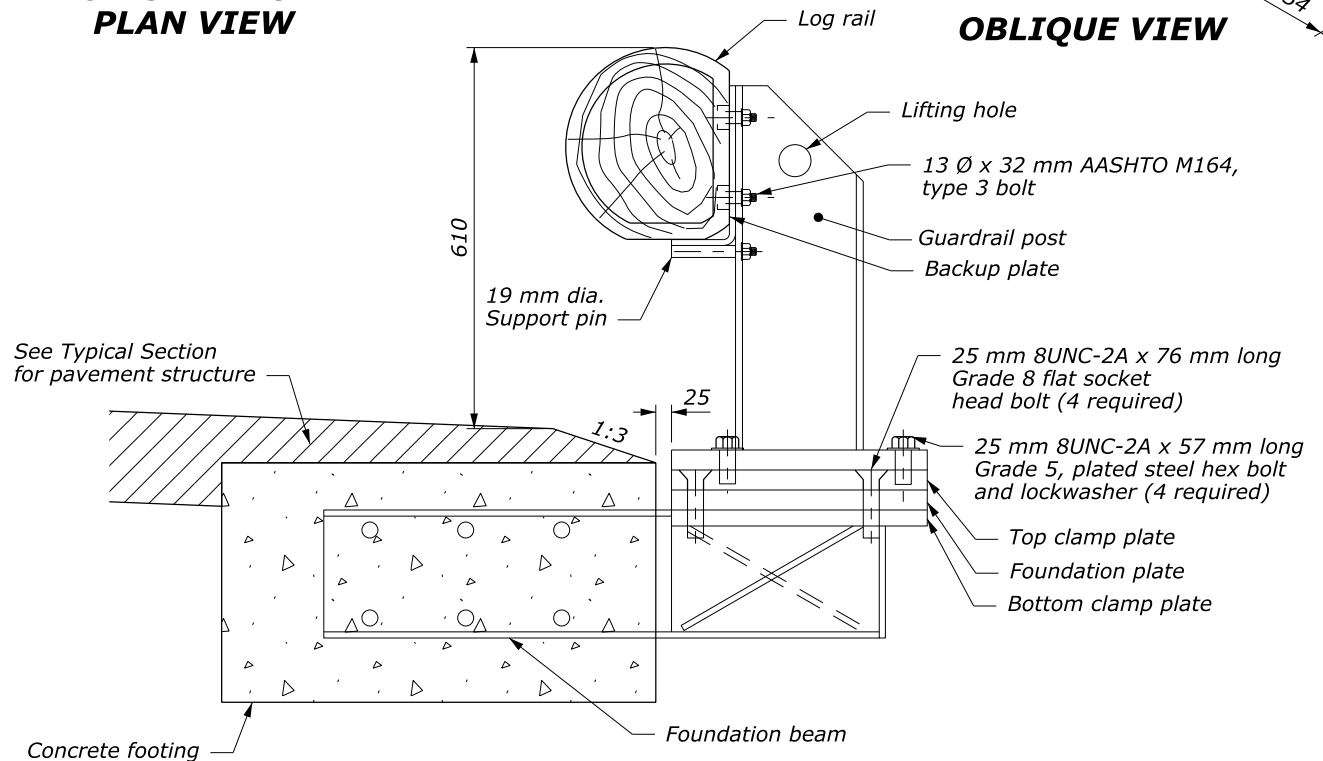
**MAXIMUM HORIZONTAL  
DEFLECTION ALLOWABLE  
PLAN VIEW**



**OBLIQUE VIEW**



**FOOTING DETAIL  
TYPICAL SECTION**

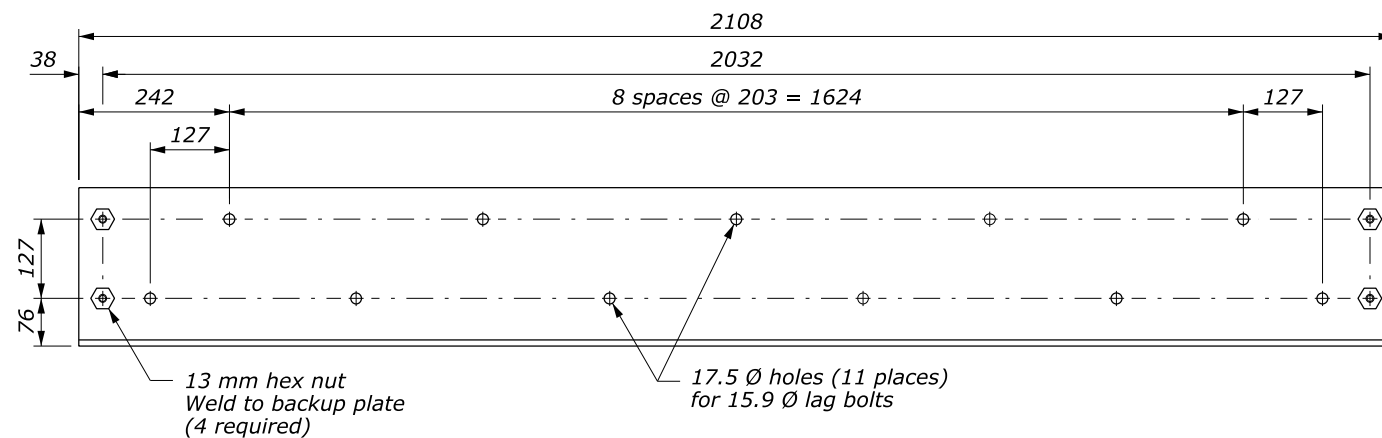


**TYPICAL SECTION**

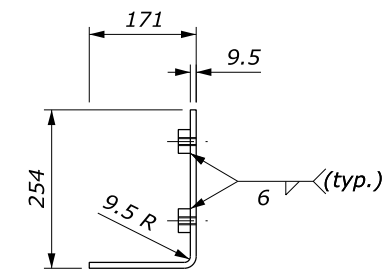
U.S. DEPARTMENT OF TRANSPORTATION FEDERAL HIGHWAY ADMINISTRATION WESTERN FEDERAL LANDS HIGHWAY DIVISION	
METRIC DETAIL	
<b>REMOVABLE STEEL-BACKED LOG RAIL</b>	
Sheet 1 of 3	
DETAIL APPROVED FOR USE 3/2009	DETAIL
REVISED:	WM617-83

NO SCALE

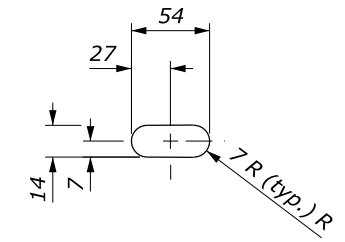
18 November 2014 8:43 AM c:\myfiles\pw\_production\dms43646\Det.W617-83.dgn [Metric]



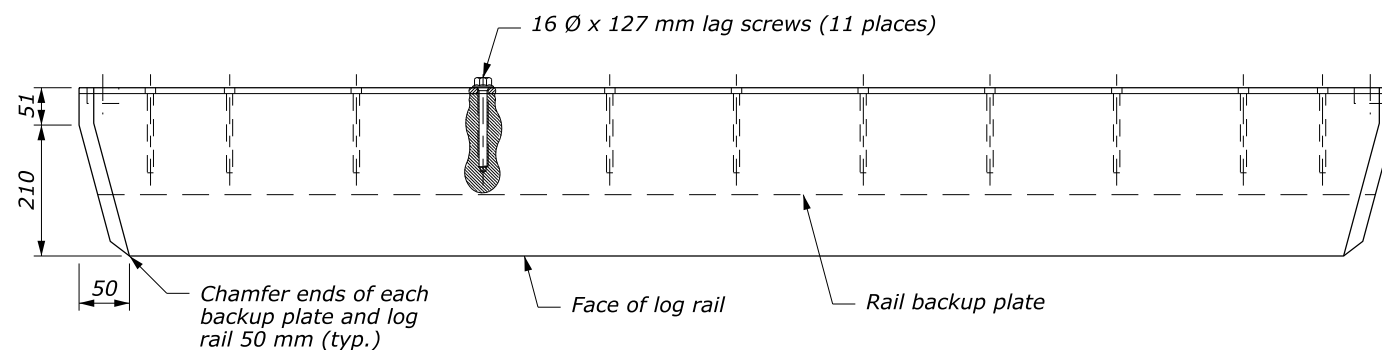
**RAIL BACKUP PLATE  
ELEVATION VIEW**



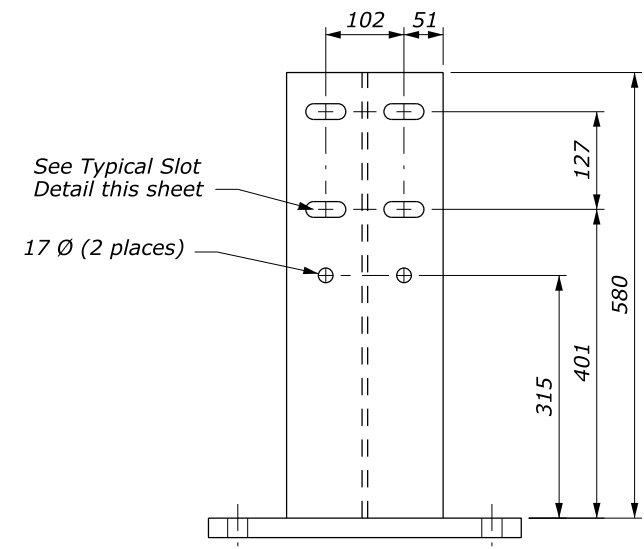
**RAIL BACKUP PLATE  
SECTION VIEW**



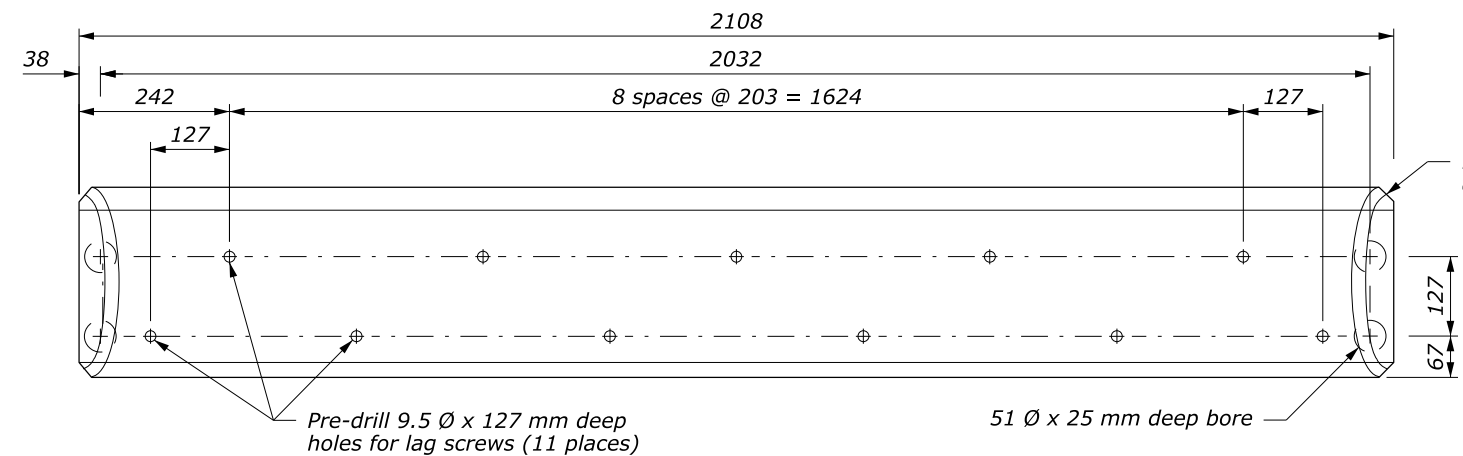
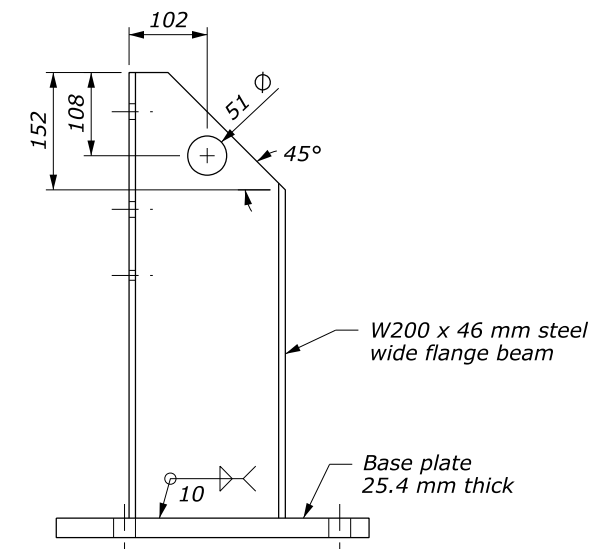
**TYPICAL SLOT DETAIL**



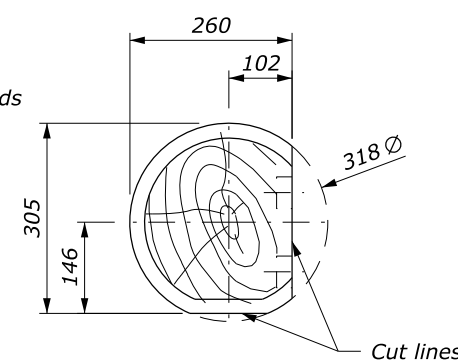
**LOG RAIL & RAIL BACKUP PLATE  
PLAN VIEW**



**GUARDRAIL POST**



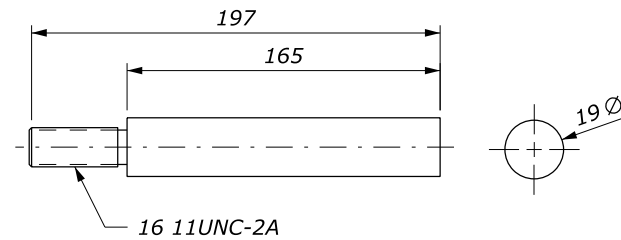
**LOG RAIL  
ELEVATION VIEW**



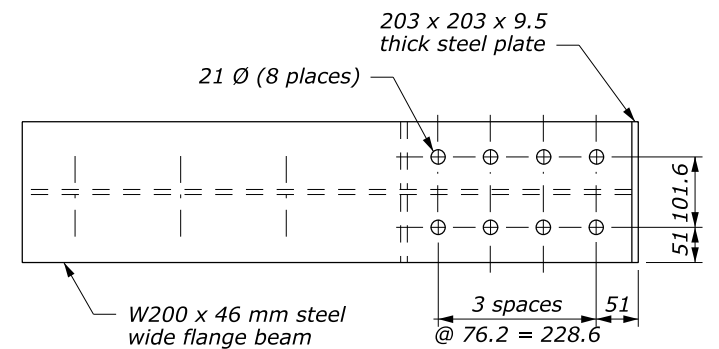
**LOG RAIL  
SECTION VIEW**

U.S. DEPARTMENT OF TRANSPORTATION FEDERAL HIGHWAY ADMINISTRATION WESTERN FEDERAL LANDS HIGHWAY DIVISION	
METRIC DETAIL	
<b>REMOVABLE STEEL-BACKED LOG RAIL</b>	
Sheet 2 of 3	
DETAIL APPROVED FOR USE 3/2009	DETAIL
REVISED:	WM617-83

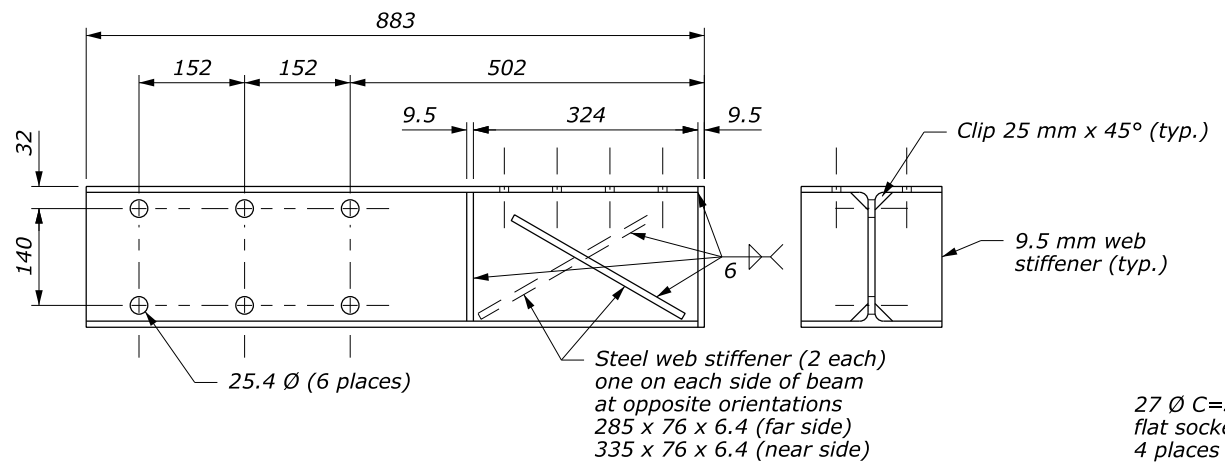
NO SCALE



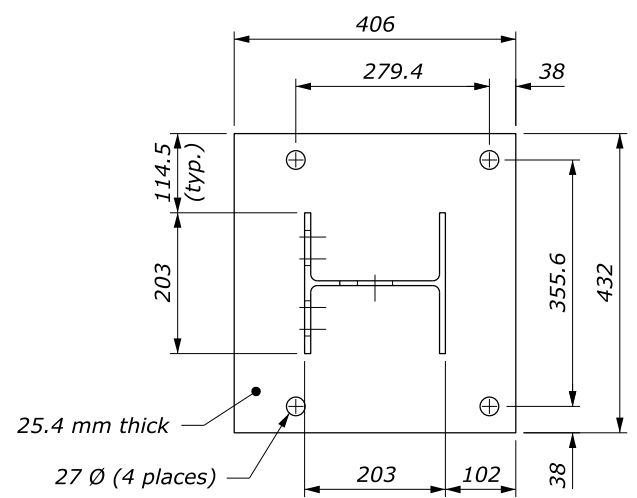
**SUPPORT PIN**



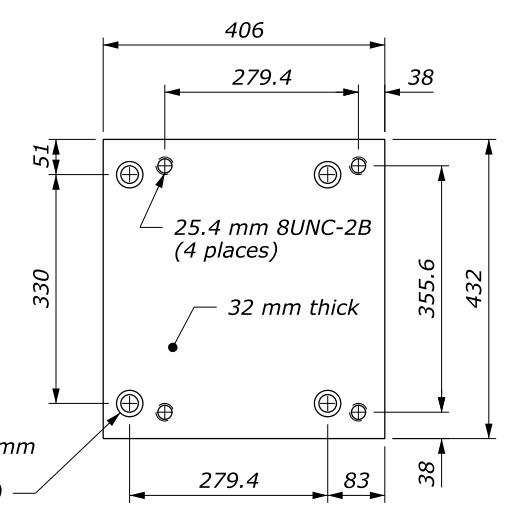
**FOUNDATION BEAM**



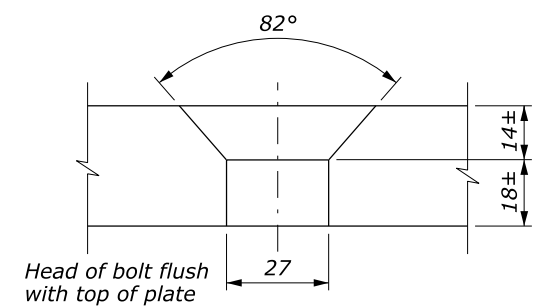
**DETAIL A**



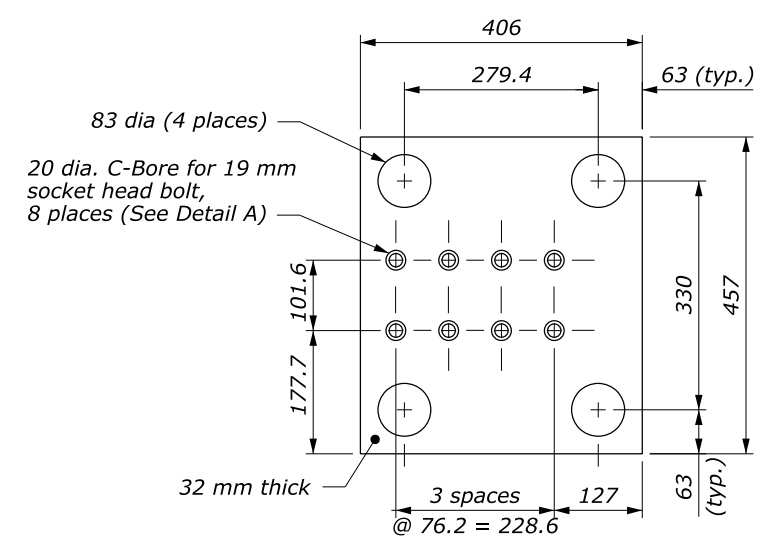
**RAIL POST BASE PLATE**



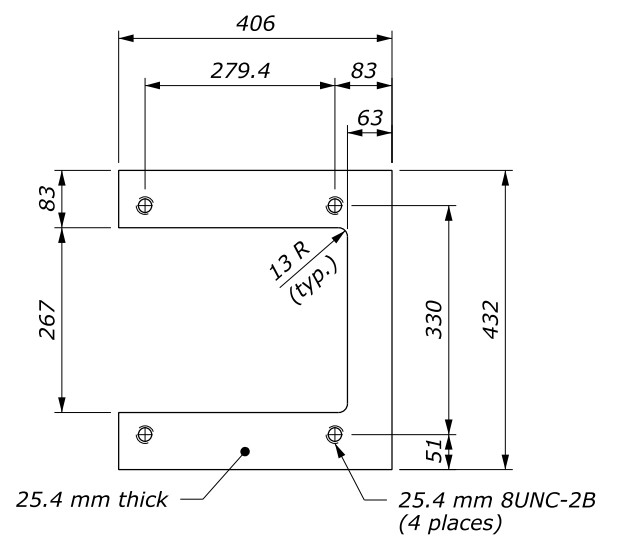
**TOP CLAMP PLATE**



**DETAIL B**



**FOUNDATION PLATE**



**BOTTOM CLAMP PLATE**

18 November 2014 8:43 AM c:\myfiles\pw\_production\dms43646\Det.W617-83.dgn [Metric]

NO SCALE

U.S. DEPARTMENT OF TRANSPORTATION FEDERAL HIGHWAY ADMINISTRATION WESTERN FEDERAL LANDS HIGHWAY DIVISION	
METRIC DETAIL	
<b>REMOVABLE STEEL-BACKED LOG RAIL</b>	
Sheet 3 of 3	
DETAIL APPROVED FOR USE 3/2009	DETAIL
REVISED:	WM617-83